



ORCHARD VIEW SCHOOL DISTRICT
COMMUNITY EDUCATION CENTER
RENOVATIONS - BID PACKAGE NO. 1
1765 ADA AVENUE
MUSKEGON, MI 49442



2/17/2023

PROJECT CONTACT LIST

OWNER:
- ORCHARD VIEW SCHOOLS
- 35 S SHERIDAN DR
MUSKEGON, MI
- CONTACT:
BRANDY CAREY
JACK TIMMER

ARCHITECT:
- BERGMANN
- 560 5TH ST, SUITE 305
GRAND RAPIDS, MI
- CONTACT: BUDDY HUYLER
- PHONE: 616.848.6969

ELECTRICAL ENGINEER:
- BERGMANN
- 7050 W SAGINAW HWY, SUITE 200
LANSING, MI
- CONTACT: ANGELA ROBINSON
- PHONE: 517.827.8726

MECHANICAL ENGINEER:
- ABILITY ENGINEERING
- 5210 WEST RIVER DR NE, SUITE C
COMSTOCK PARK, MI
- CONTACT: CHRIS NOLAN
- PHONE: 616.232.5817

STRUCTURAL ENGINEER:
- BERGMANN
- 7050 W SAGINAW HWY, SUITE 200
LANSING, MI
- CONTACT: KIRA TENNES
- PHONE: 517.272.9835

DRAWING INDEX

00 - GENERAL
G000 COVER SHEET
G001 CODE COMPLIANCE & LIFE SAFETY PLANS
03 - STRUCTURAL
S101 STRUCTURAL DETAILS
04 - ARCHITECTURAL
A001 GENERAL NOTES AND LEGENDS
A002 GENERAL REQUIREMENTS
A003 SPECIFICATIONS
AD101 FIRST FLOOR DEMOLITION PLAN
AD121 FIRST FLOOR DEMOLITION CEILING PLAN AND EXTERIOR ELEVATION
A101 FIRST FLOOR PLAN
A103 ROOF PLAN
A121 FIRST FLOOR CEILING PLAN
A141 FIRST FLOOR FINISH PLAN
A201 EXTERIOR ELEVATIONS
A301 WALL SECTIONS
A302 WALL SECTIONS
A303 WALL SECTIONS
A601 SCHEDULES, DOOR AND WINDOW DETAILS
05 - MECHANICAL
MD01 FIRST FLOOR MECHANICAL AND PLUMBING DEMOLITION PLAN
M001 GENERAL MECHANICAL INFORMATION
M101 FIRST FLOOR MECHANICAL PLANS
08 - ELECTRICAL
E001 LEGEND
E002 SPECIFICATIONS
ED101 ELECTRICAL DEMOLITION PLAN
E101 POWER PLAN
E201 LIGHTING PLAN
E601 ONE-LINE DIAGRAM
E701 DETAILS
E801 SCHEDULES
E802 SCHEDULES

DATE	DESCRIPTION
12/14/2022	BID PACKAGE - WINDOWS
1/24/2023	BID PACKAGE #1 - OWNER REVIEW
1/31/2023	BID PACKAGE #1 - BIDS
2/7/2023	BID PACKAGE #1 - PERMITS
2/15/2023	BID PACKAGE #1 - ADDENDUM #1
2/17/2023	BID PACKAGE #1 - ADDENDUM #2

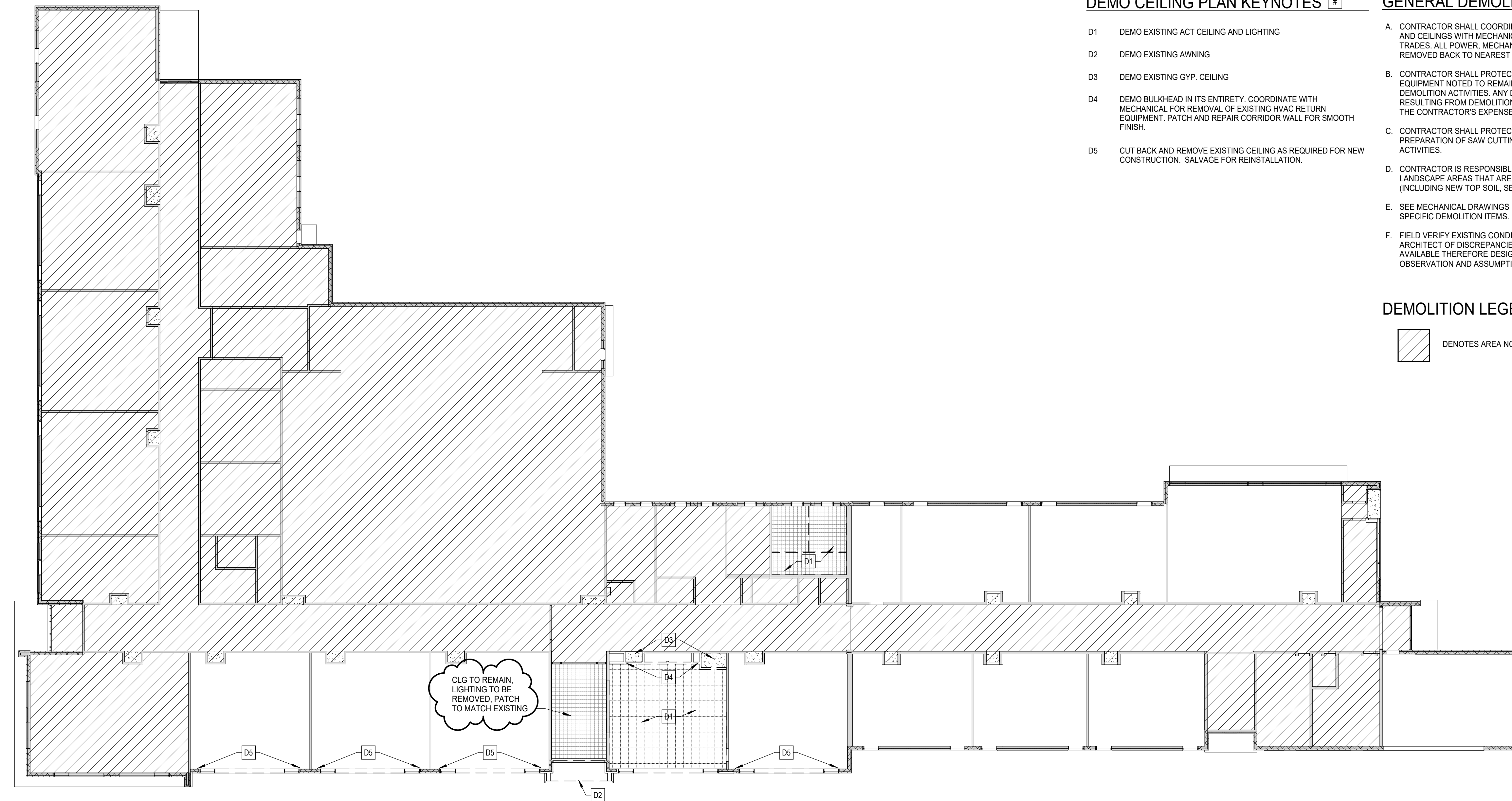
PROJECT LOCATION MAP



2/17/2023 10:47:12 AM

DRAWING NUMBER

G000



2 FIRST FLOOR DEMOLITION RCP
SCALE: 1/16" = 1'-0"

DEMO CEILING PLAN KEYNOTES #

- D1 DEMO EXISTING ACT CEILING AND LIGHTING
- D2 DEMO EXISTING AWNING
- D3 DEMO EXISTING GYP. CEILING
- D4 DEMO BULKHEAD IN ITS ENTIRETY. COORDINATE WITH MECHANICAL FOR REMOVAL OF EXISTING HVAC RETURN EQUIPMENT. PATCH AND REPAIR CORRIDOR WALL FOR SMOOTH FINISH.
- D5 CUT BACK AND REMOVE EXISTING CEILING AS REQUIRED FOR NEW CONSTRUCTION. SALVAGE FOR REINSTALLATION.

GENERAL DEMOLITION NOTES

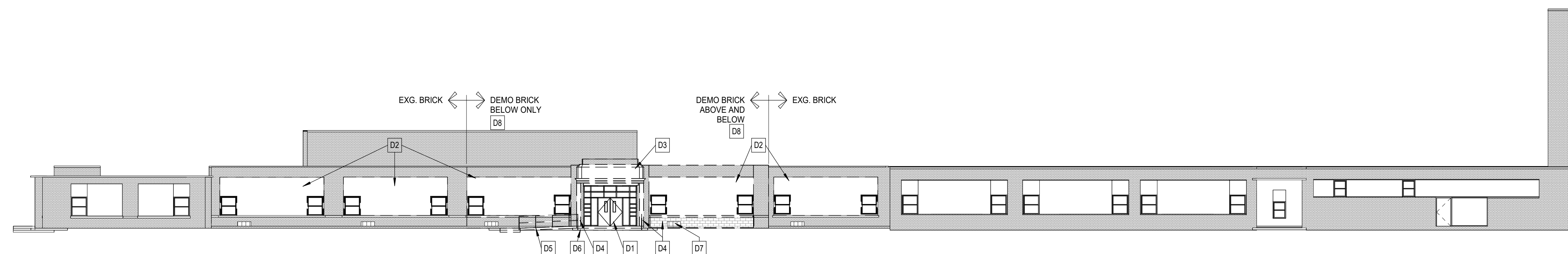
- A. CONTRACTOR SHALL COORDINATE REMOVAL OF FLOORS, WALLS AND CEILINGS WITH MECHANICAL, ELECTRICAL AND PLUMBING TRADES. ALL POWER, MECHANICAL AND PLUMBING LINES SHALL BE REMOVED BACK TO NEAREST MAIN BRANCH LINE OR PANEL.
- B. CONTRACTOR SHALL PROTECT EXISTING CONSTRUCTION AND EQUIPMENT NOTED TO REMAIN FROM DAMAGE RESULTING FROM DEMOLITION ACTIVITIES. ANY DAMAGE TO EXISTING PROPERTY RESULTING FROM DEMOLITION SHALL BE REPAIRED IMMEDIATELY AT THE CONTRACTOR'S EXPENSE.
- C. CONTRACTOR SHALL PROTECT ADJACENT SURFACES IN PREPARATION OF SAW CUTTING REQUIRED FOR DEMOLITION ACTIVITIES.
- D. CONTRACTOR IS RESPONSIBLE FOR REPAIRING ALL LAWN AND LANDSCAPE AREAS THAT ARE DAMAGED DURING CONSTRUCTION (INCLUDING NEW TOP SOIL, SEED, AND LANDSCAPE).
- E. SEE MECHANICAL DRAWINGS FOR ADDITIONAL CLASSROOM SPECIFIC DEMOLITION ITEMS.
- F. FIELD VERIFY EXISTING CONDITIONS PRIOR TO DEMOLITION. INFORM ARCHITECT OF DISCREPANCIES. EXISTING DRAWINGS ARE NOT AVAILABLE THEREFORE DESIGN IS BASED UPON VISUAL OBSERVATION AND ASSUMPTIONS.

DEMOLITION LEGEND

DENOTES AREA NOT IN CONTRACT (N.I.C.)

DEMO ELEVATION KEYNOTES #

- D1 REMOVE EXISTING ENTRY DOOR AND WINDOW SYSTEM. PREPARE OPENING TO RECEIVE NEW ENTRY SYSTEM (SEE PLANS).
- D2 REMOVE EXISTING EIFS WALL AND WINDOWS UP TO BRICK SURROUND AND SILL. PREPARE OPENING TO RECEIVE NEW INFILL AND WINDOWS (SEE PLANS).
- D3 REMOVE EXISTING CANOPY/AWNING AND ANY FASTENERS/ATTACHMENTS.
- D4 REMOVE ENTIRE PORTION OF MASONRY WALL AS NOTED.
- D5 REMOVE EXISTING CONCRETE RAMP AND RAILING. PREPARE GROUND BELOW TO RECEIVE NEW LANDSCAPING.
- D6 DEMO EXISTING EXTERIOR LANDING, STAIRS, AND RAILING. PREPARE AREA TO RECEIVE NEW PER PLANS.
- D7 REMOVE EX LOUVER. SEE MECHANICAL
- D8 REMOVE EXISTING BRICK VENEER, INCLUDING ABOVE & BELOW OPENINGS WHERE NOTED ON ELEVATIONS. BREAK OFF TIES FLUSH WITH BACK-UP.



1 NORTH ELEVATION DEMO
SCALE: 1/16" = 1'-0"



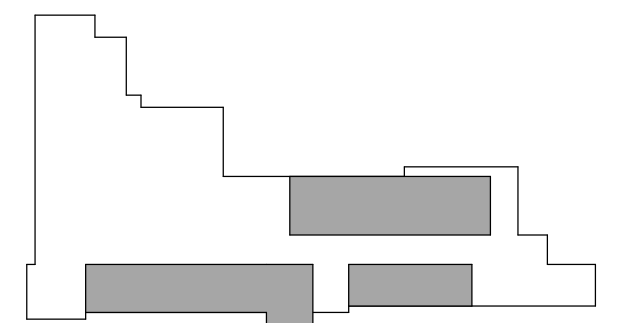
560 5th St. NW
Suite 305
Grand Rapids, MI 49504
www.bergmannpc.com

**ORCHARD VIEW
SCHOOL
DISTRICT**

**COMMUNITY
EDUCATION
CENTER**

1765 ADA AVENUE
MUSKEGON, MI 49442

Date Revised	Description
1/24/2023	BID PACKAGE #1 - OWNER REVIEW
1/31/2023	BID PACKAGE #1 - BIDS
2/7/2023	BID PACKAGE #1 - PERMITS
2/15/2023	BID PACKAGE #1 - ADDENDUM #1
2/17/2023	BID PACKAGE #1 - ADDENDUM #2



Key Plan

Copyright © Bergmann Associates, Architects, Engineers, Landscape Architects & Surveyors, D.P.C.

Project Manager	Discipline Lead
D HOLTROP	B HUYLER
Designer	Reviewer
E POST	R KEUNEKE
Date Issued	Project Number
2/17/2023	16600.00

Sheet Name

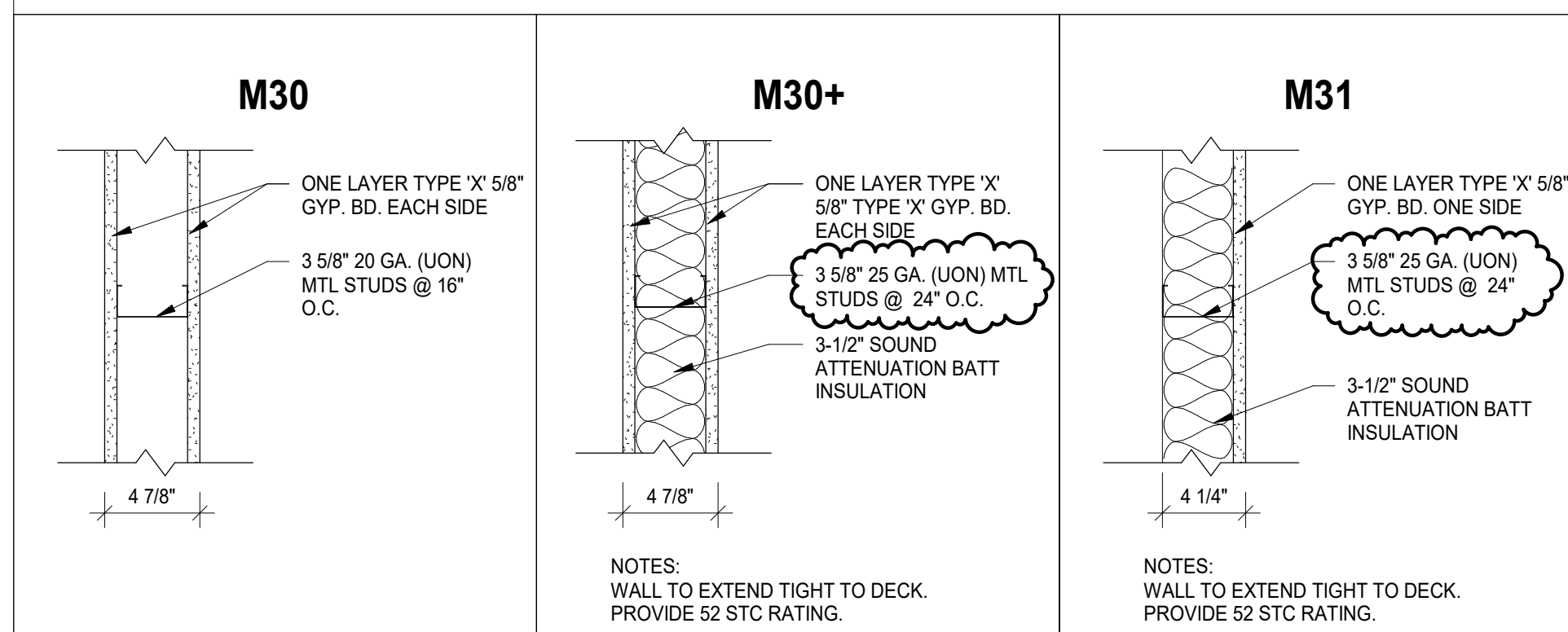
**FIRST FLOOR DEMOLITION
CEILING PLAN AND
EXTERIOR ELEVATION**

Drawing Number

AD121

WALL TYPES

NOTE: SEE TYPICAL WALL SECTIONS FOR ADDITIONAL INFORMATION AT FLOOR AND DECK ABOVE CONDITIONS.



WALL LEGEND

WALL MATERIAL	WALL SIZES
C = CONCRETE MASONRY UNITS	4 = 4" NOMINAL, 3 5/8" ACTUAL 6 = 6" NOMINAL, 5 5/8" ACTUAL 8 = 8" NOMINAL, 7 5/8" ACTUAL
F = FURRING CHANNEL	1 = 7/8" METAL HAT CHANNEL @ 24" O.C. 2 = 1-1/2" METAL HAT CHANNEL @ 24" O.C.
M = METAL STUD	1 = 1-5/8" METAL STUDS @ 16" O.C. 2 = 2-1/2" METAL STUDS @ 16" O.C. 3 = 3-5/8" METAL STUDS @ 16" O.C. 6 = 6" METAL STUDS @ 16" O.C.
WALL INFORMATION	
1 = WALL HEIGHT STUD FRAMING AND GYP BOARD FINISH TO DECK ABOVE 2 = GYP BOARD FINISH TO 8" ABOVE CEILING 3 = SOUND ATTENUATION CAVITY BATT INSULATION FULL HEIGHT, FLOOR TO DECK	
COLUMN ENCLOSURES, CHASES AND ENCLOSED UNINHABITABLE SPACES ARE TO BE WALL TYPE M31, UNLESS NOTED OTHERWISE.	

REF WALL TYPES AND DETAILS; SEE THIS SHEET

KEYNOTES

- F1 16" ADJUSTABLE WALL SHELVING W/ 2 STANDARDS EACH WALL ON BRACKETS. MELAMINE FINISH.
- F2 INFILL OPENING FROM BULLETIN/DISPLAY REMOVAL TO CREATE FLUSH CONDITION W/ EXISTING WALL. INFILL WITH METAL STUDS, SHEETROCK, AND FEATHER IN NEW PLASTER COAT INTO EXISTING WALL CONSTRUCTION TO MAINTAIN EXISTING FIRE RATING.
- F3 NEW WALL INFILL AT DOOR REMOVAL. MATCH FINISH OF ADJACENT WALLS.
- F4 TYPE X DRYWALL ON 3/4" HAT CHANNEL ON EXISTING WALL. MAINTAIN FIRE RATING.
- F5 NEW LAYER OF TYPE X GYP ON 3/4" HAT CHANNEL FURRING ON ENTIRE LENGTH OF EXISTING MASONRY WALL FOR SMOOTH SURFACE FINISH. MAINTAIN FIRE RATING.
- F6 NEW ADA PUSH BUTTONS EITHER SIDE OF ENTRANCE. MOUNTING HEIGHT MAX 4'-0" TO TOP OF PLATE.
- F7 BULKHEAD ABOVE
- F8 5/8" GYP BD ON 2" LT GA METAL FURRING. EXTEND TO 8" (MIN) OR FIRST COURSE OF EXISTING TILE REMOVED FROM EXISTING WALL.
- F9 PAINT EXISTING UNIT VENT COVER TO MATCH WALL FINISH COLOR.
- F10 TO REPAIR WALL BENEATH REMOVED TILE, APPLY SHEETROCK AND FEATHER NEW PLASTER COAT INTO EXISTING TO PROVIDE FLUSH/SEAMLESS SURFACE.
- F11 SPLICING OF EXISTING WIRE MOUND AND CONDUIT BY CONTRACTOR.
- F12 PROVIDE SEMI-RECESSED FIRE EXTINGUISHER CABINET. SURROUNDING BLOCK SHALL MAINTAIN 4" SOLID SOAP TO MAINTAIN EXISTING FIRE RATING.
- F13 VERIFY EXISTING CONDITION OF WALL SURFACE BENEATH EXISTING/REMOVED PANNELING. PROVIDE 3/4" FURRING AND GYP AS REQUIRED TO CREATE SMOOTH FINISHED SURFACE FOR PAINT.

GENERAL NOTES

- A. REFER TO A001 FOR GENERAL NOTES AND LEGENDS.
- B. REFER TO A120 SERIES DRAWINGS FOR REFLECTED CEILING PLANS AND DETAILS. (FUTURE BP)
- C. REFER TO A140 SERIES DRAWINGS FOR FINISH PLANS, SCHEDULES, AND DETAILS. (FUTURE BP)
- D. REFER TO A600 SERIES DRAWINGS FOR DOOR SCHEDULE, WINDOW SCHEDULE, DETAILS, AND BASIS OF DESIGN.
- E. ALL DOORS TO BE LOCATED 4" FROM DRYWALL ADJACENT WALL UNLESS OTHERWISE NOTED.
- F. ALIGN FACES OF MASONRY AND STUD WALLS INDICATED IN THE SAME PLANE ON PLANS. U.O.N.



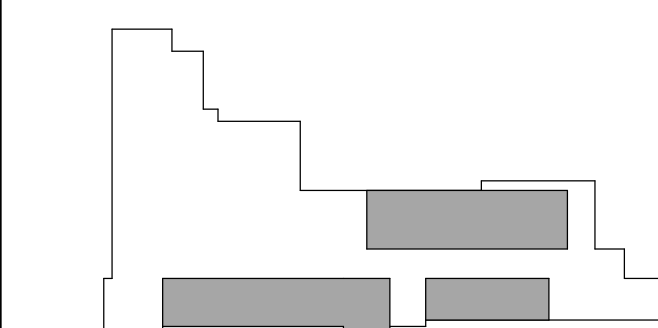
560 5th St. NW
Suite 305
Grand Rapids, MI 49504
www.bergmannpc.com

ORCHARD VIEW SCHOOL DISTRICT

COMMUNITY EDUCATION CENTER

1765 ADA AVENUE
MUSKEGON, MI 49442

Date Revised	Description
1/24/2023	BID PACKAGE #1 - OWNER REVIEW
1/31/2023	BID PACKAGE #1 - BIDS
2/7/2023	BID PACKAGE #1 - PERMITS
2/15/2023	BID PACKAGE #1 - ADDENDUM #1
2/17/2023	BID PACKAGE #1 - ADDENDUM #2



Key Plan

Copyright © Bergmann Associates, Architects, Engineers, Landscape Architects & Surveyors, D.P.C.

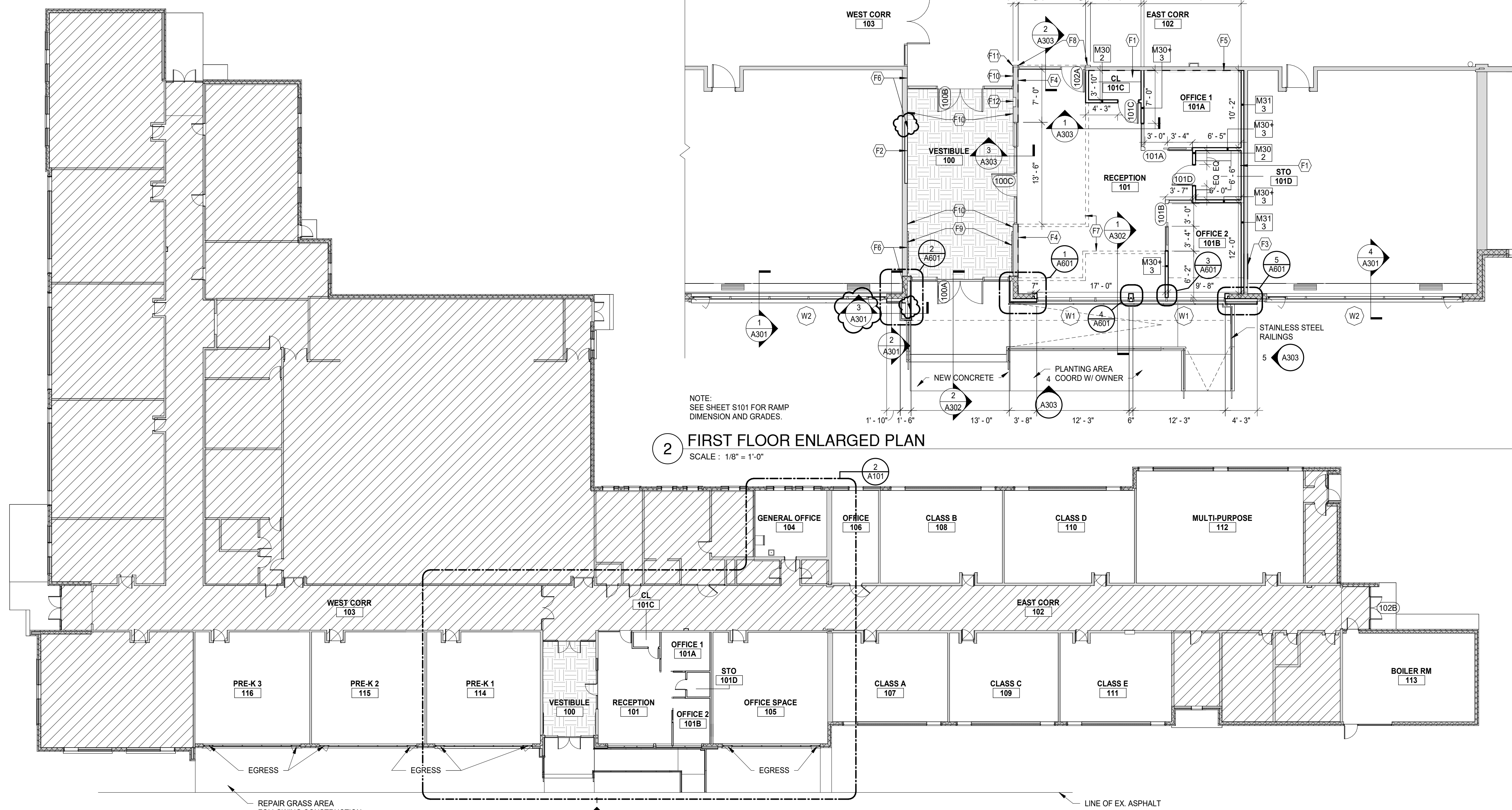
Project Manager	Discipline Lead
D HOLTROP	B HUYLER
Designer	Reviewer
E POST	R KEUNEKE
Date Issued	Project Number
2/17/2023	16600.00

Sheet Name

FIRST FLOOR PLAN

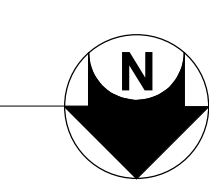
Drawing Number

A101



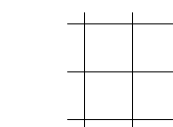
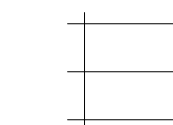

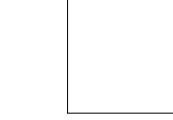
2 FIRST FLOOR ENLARGED PLAN
SCALE: 1/8" = 1'-0"

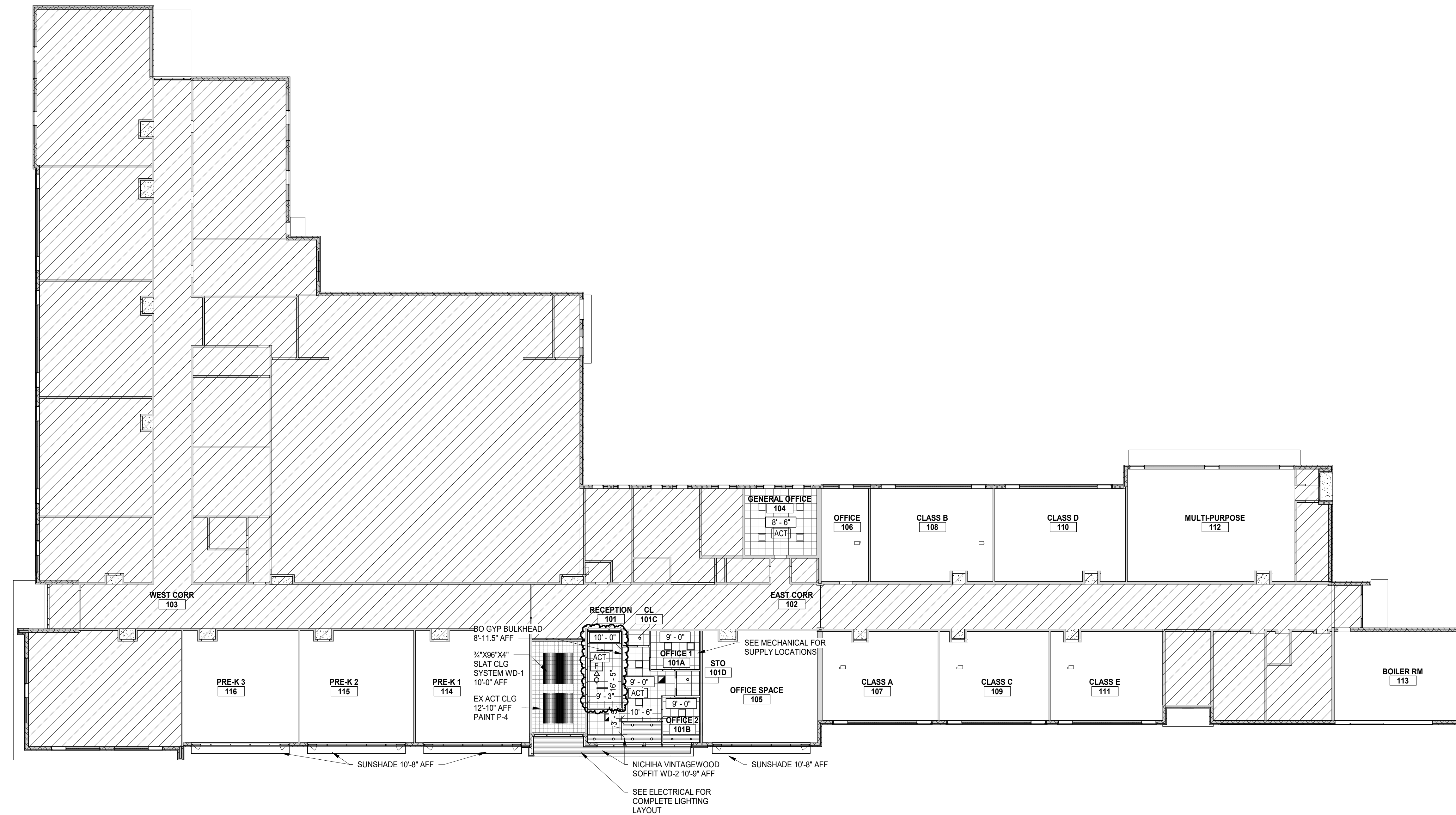
1 FIRST FLOOR PLAN
SCALE: 1/16" = 1'-0"



LEGEND

NOTE: SEE OTHER DISCIPLINE DRAWINGS (E.G. MECHANICAL, PLUMBING AND ELECTRICAL DRAWINGS) FOR ASSOCIATED SYSTEMS AND INFORMATION ABOUT SYMBOLS NOT INDICATED IN THIS LEGEND.

-  2' x 2' SUSPENDED CEILING TILE
-  2' x 4' SUSPENDED CEILING TILE
-  GYPSUM BOARD CEILING/SOFFIT
-  OPEN TO DECK



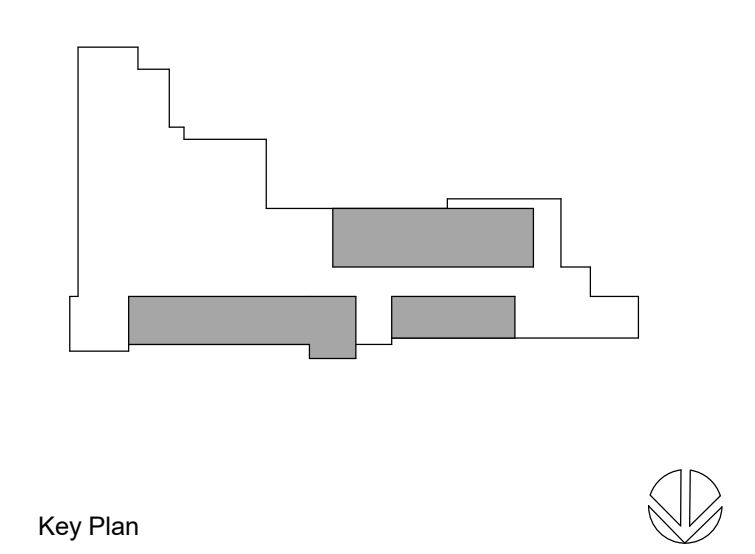
1 FIRST FLOOR REFLECTED CEILING PLAN
SCALE: 1/16" = 1'-0"

ORCHARD VIEW SCHOOL DISTRICT

COMMUNITY EDUCATION CENTER

1765 ADA AVENUE
MUSKEGON, MI 49442

Date Revised	Description
1/24/2023	BID PACKAGE #1 - OWNER REVIEW
1/31/2023	BID PACKAGE #1 - BIDS
2/7/2023	BID PACKAGE #1 - PERMITS
2/15/2023	BID PACKAGE #1 - ADDENDUM #1
2/17/2023	BID PACKAGE #1 - ADDENDUM #2



Key Plan

Copyright © Bergmann Associates, Architects, Engineers, Landscape Architects & Surveyors, D.P.C.

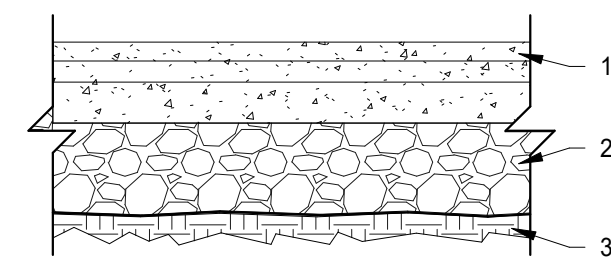
Project Manager	Discipline Lead
D HOLTROP	B HUYLER
Designer	Reviewer
E POST	R KEUNEKE
Date Issued	Project Number
2/17/2023	16600.00

Sheet Name

FIRST FLOOR CEILING PLAN

Drawing Number

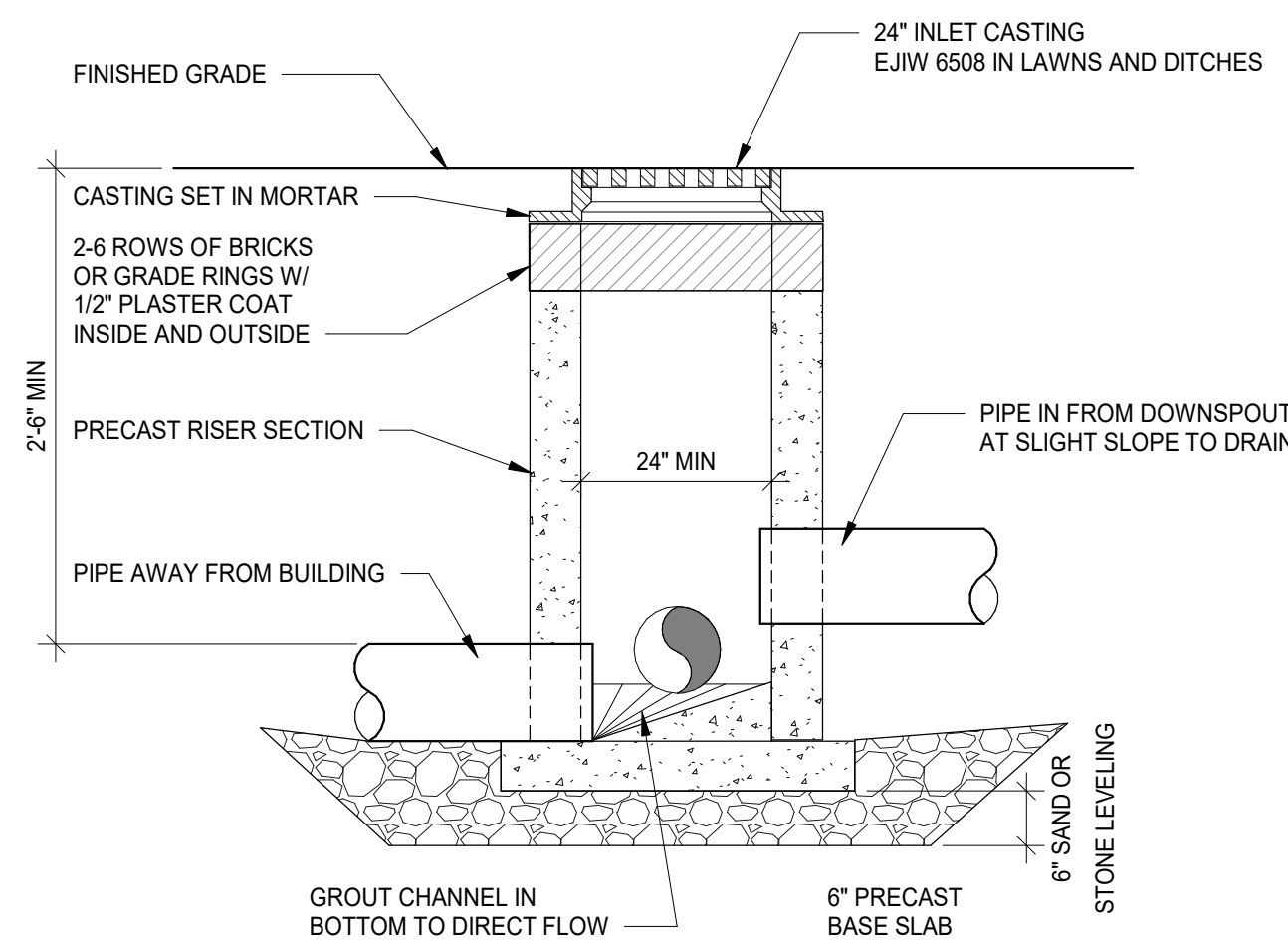
A121



- 1. 6" CONCRETE - MDOT P1 SECTION (28 DAY STRENGTH 4000 PSI)
- 2. 5" MDOT 21AA - AGGREGATE BASE COURSE HEAVY DUTY INCLUDING 1" BEYOND CURB
- 3. COMPACTED SUBGRADE, PROOFROLLED AND APPROVED SUBGRADE

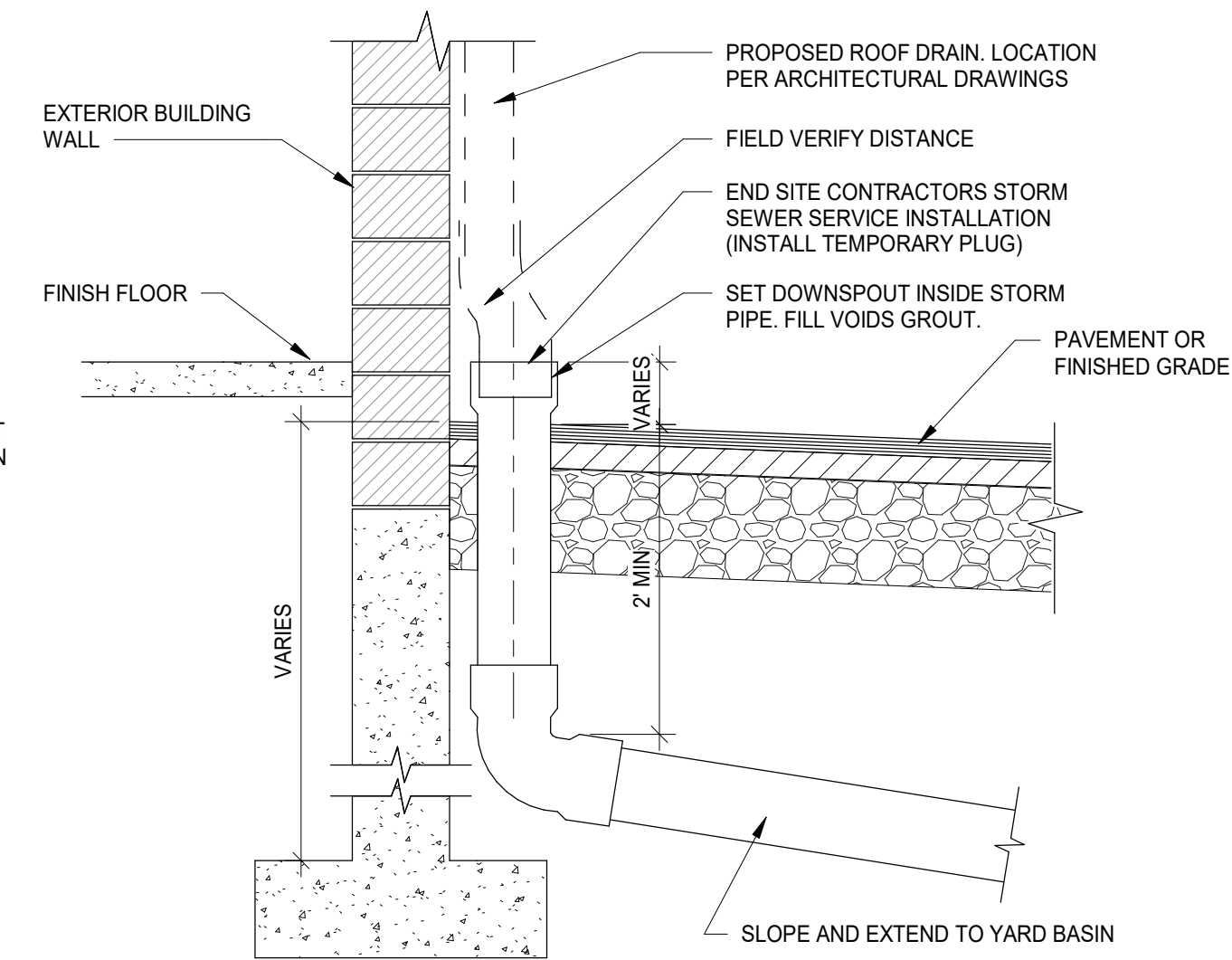
- NOTES:
- 1. COMPACT SUBGRADE TO A MODIFIED PROCTOR DENSITY OF 95%.
 - 2. SUBBASE COURSE SHALL HAVE NO MORE THAN 7% BY WEIGHT FINER THAN NO. 200 SIEVE.

STANDARD CONCRETE PAVEMENT SECTION N.T.S.



NOTE: LOCATE BASIN AT LOW POINT IN GRASS AREA.

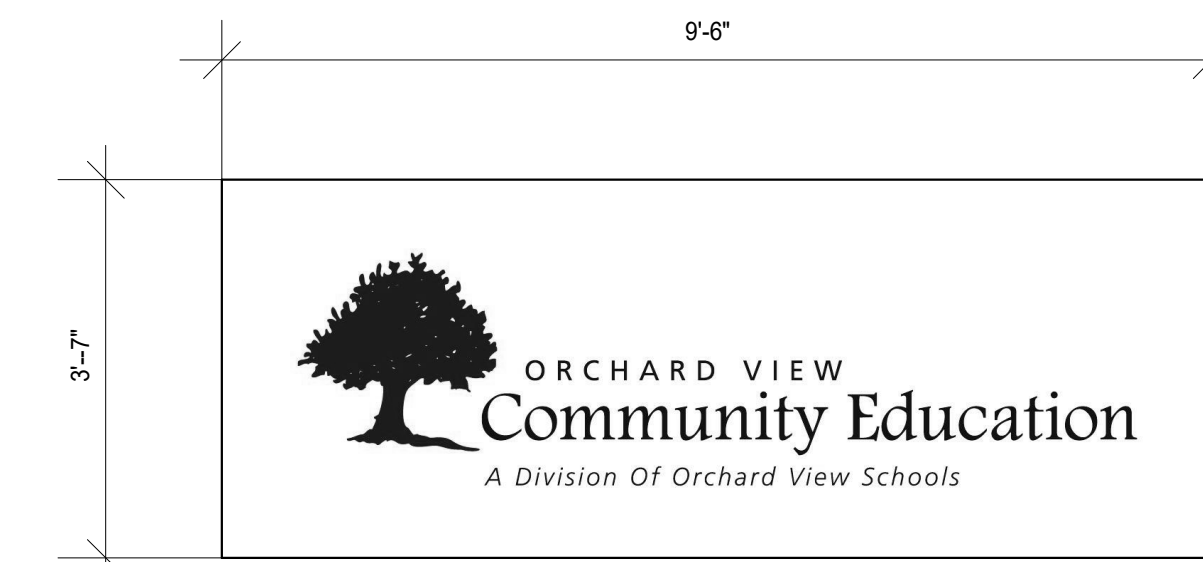
YARD BASIN DETAIL N.T.S.



DOWNSPOUT DRAINAGE DETAIL N.T.S.

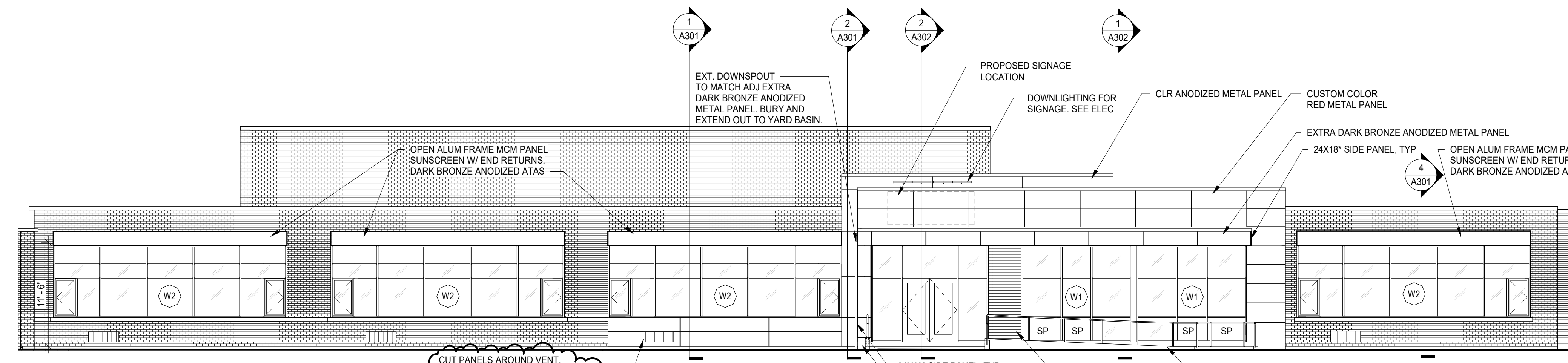
GENERAL NOTES

- A. REFER TO A600 SERIES FOR WINDOW SCHEDULE AND DETAILS
- B. REFER TO SPECIFICATIONS FOR EXTERIOR MATERIAL INFORMATION
- C. CONTRACTOR TO FIELD VERIFY ALL EXISTING OPENINGS

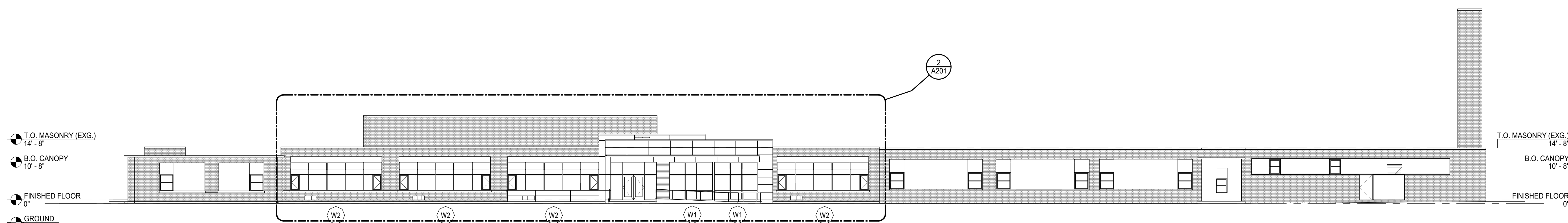


PROPOSED SIGNAGE (BY OWNER)

<35 SF



2 NORTH ELEVATION - ENLARGED AREA OF WORK SCALE: 1/8" = 1'-0"



1 NORTH ELEVATION SCALE: 1/16" = 1'-0"

560 5th St. NW Suite 305 Grand Rapids, MI 49504 www.bergmannpc.com

ORCHARD VIEW SCHOOL DISTRICT

COMMUNITY EDUCATION CENTER

1765 ADA AVENUE MUSKEGON, MI 49442

Date Revised	Description
1/24/2023	BID PACKAGE #1 - OWNER REVIEW
1/31/2023	BID PACKAGE #1 - BIDS
2/7/2023	BID PACKAGE #1 - PERMITS
2/15/2023	BID PACKAGE #1 - ADDENDUM #1
2/17/2023	BID PACKAGE #1 - ADDENDUM #2

Copyright © Bergmann Associates, Architects, Engineers, Landscape Architects & Surveyors, D.P.C.

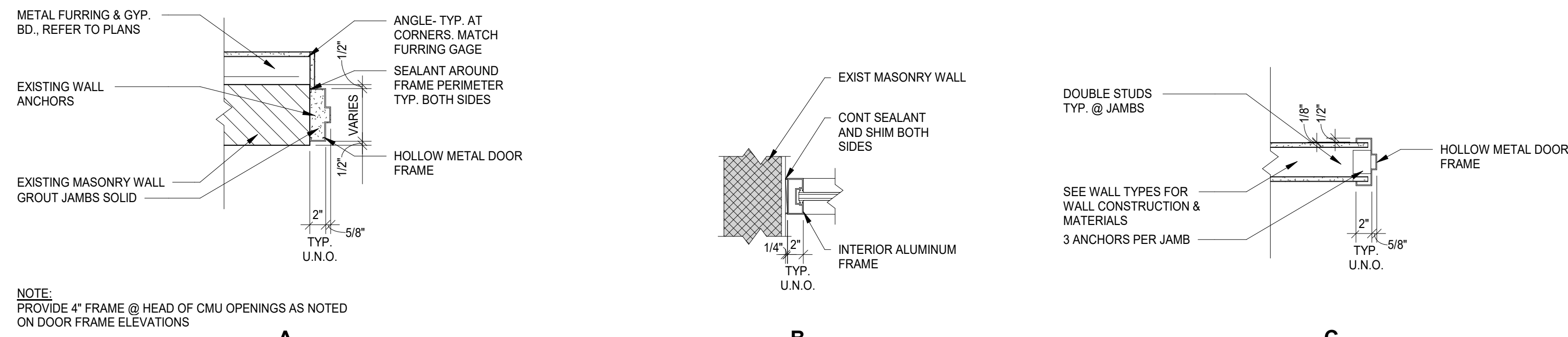
Project Manager	Discipline Lead
D HOLTROP	B HUYLER
Designer	Reviewer
E POST	R KEUNEKE
Date Issued	Project Number
2/17/2023	16600.00

Sheet Name

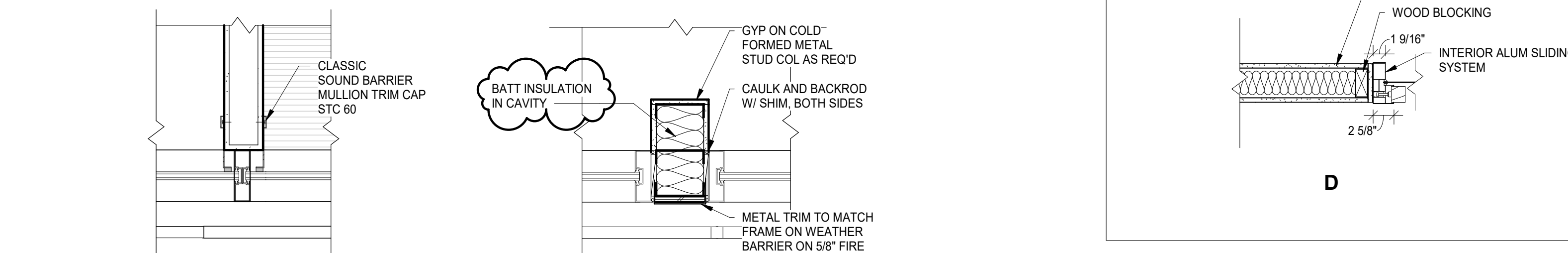
EXTERIOR ELEVATIONS

Drawing Number

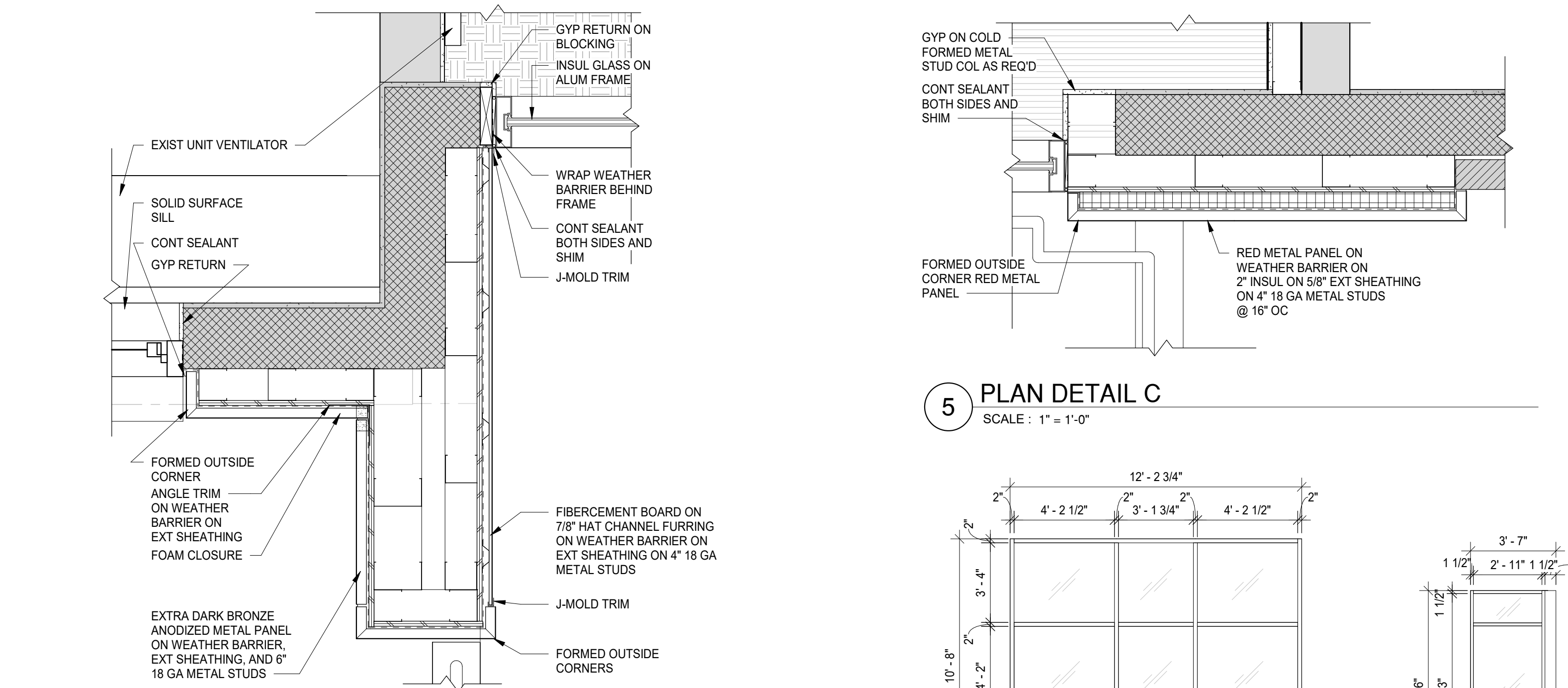
A201



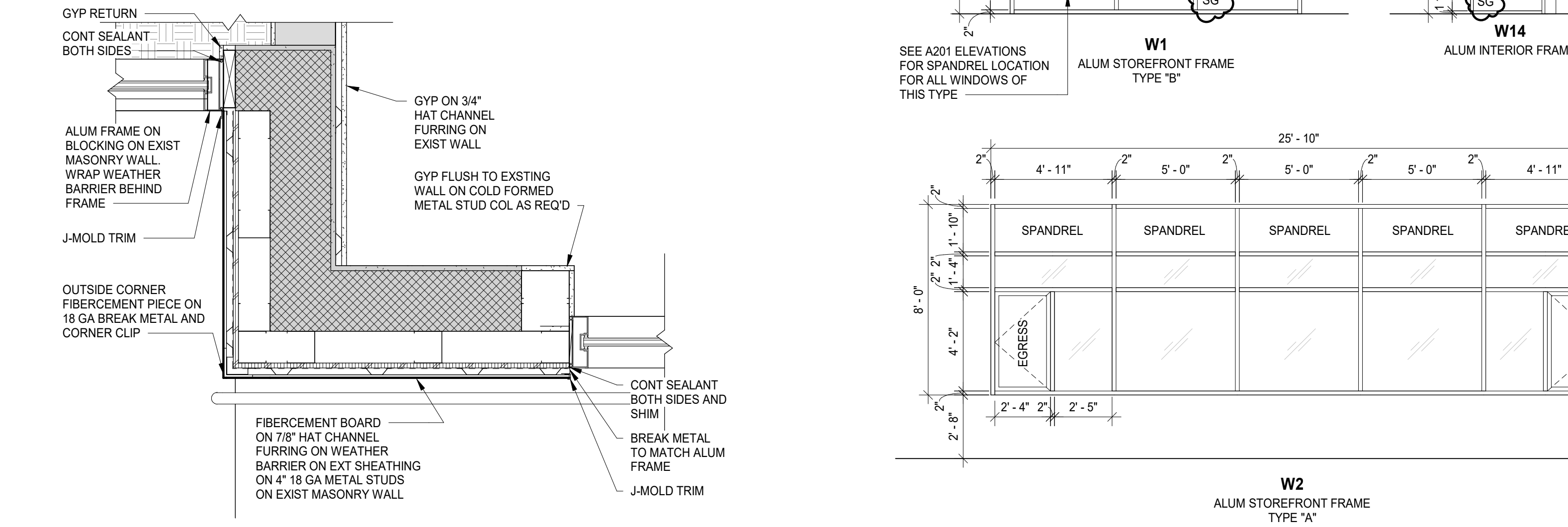
JAMB DETAILS (HEAD DETAIL SIM.)



3 WALL TO WINDOW DETAIL SCALE: 1" = 1'-0"
4 CENTER COL, WINDOW DETAIL SCALE: 1" = 1'-0"

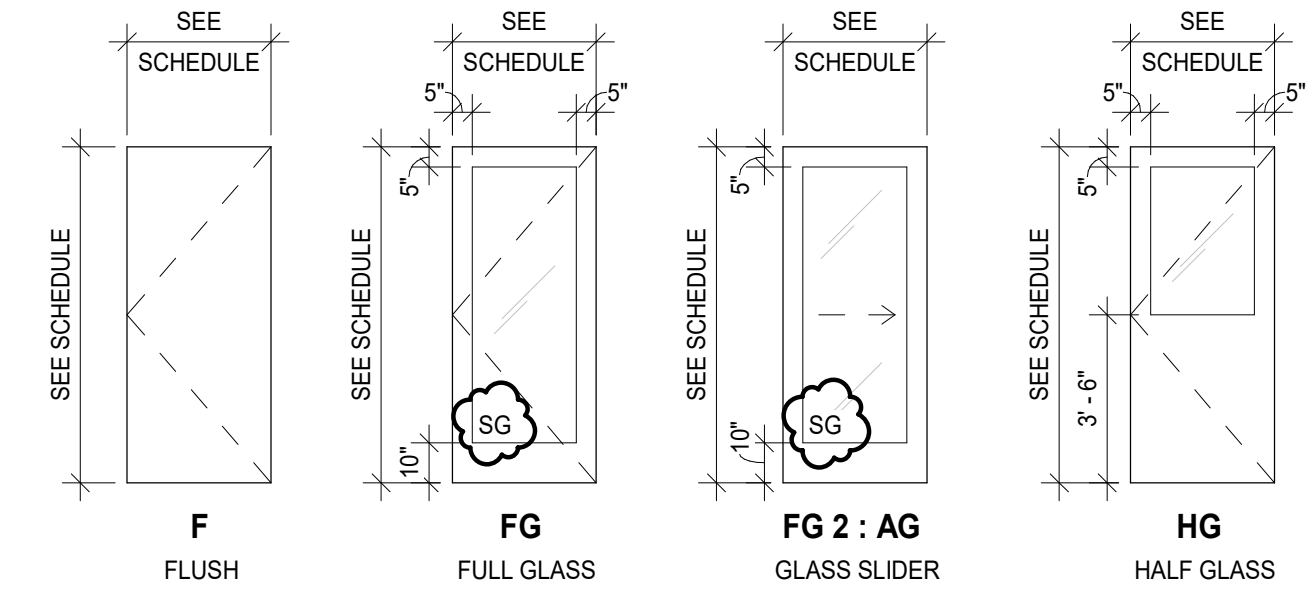


2 PLAN DETAIL B SCALE: 1" = 1'-0"
5 PLAN DETAIL C SCALE: 1" = 1'-0"

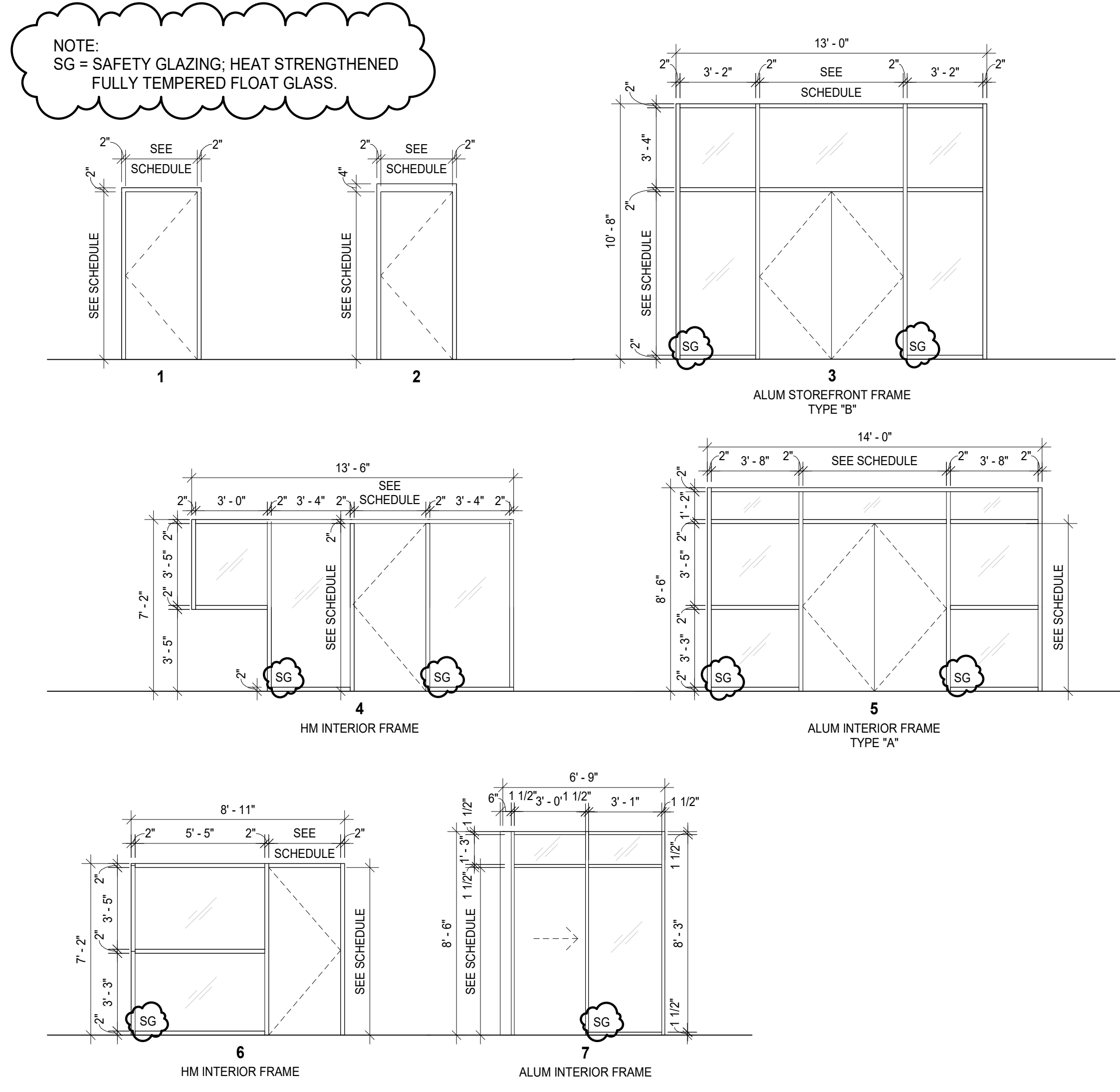


1 PLAN DETAIL A SCALE: 1" = 1'-0"

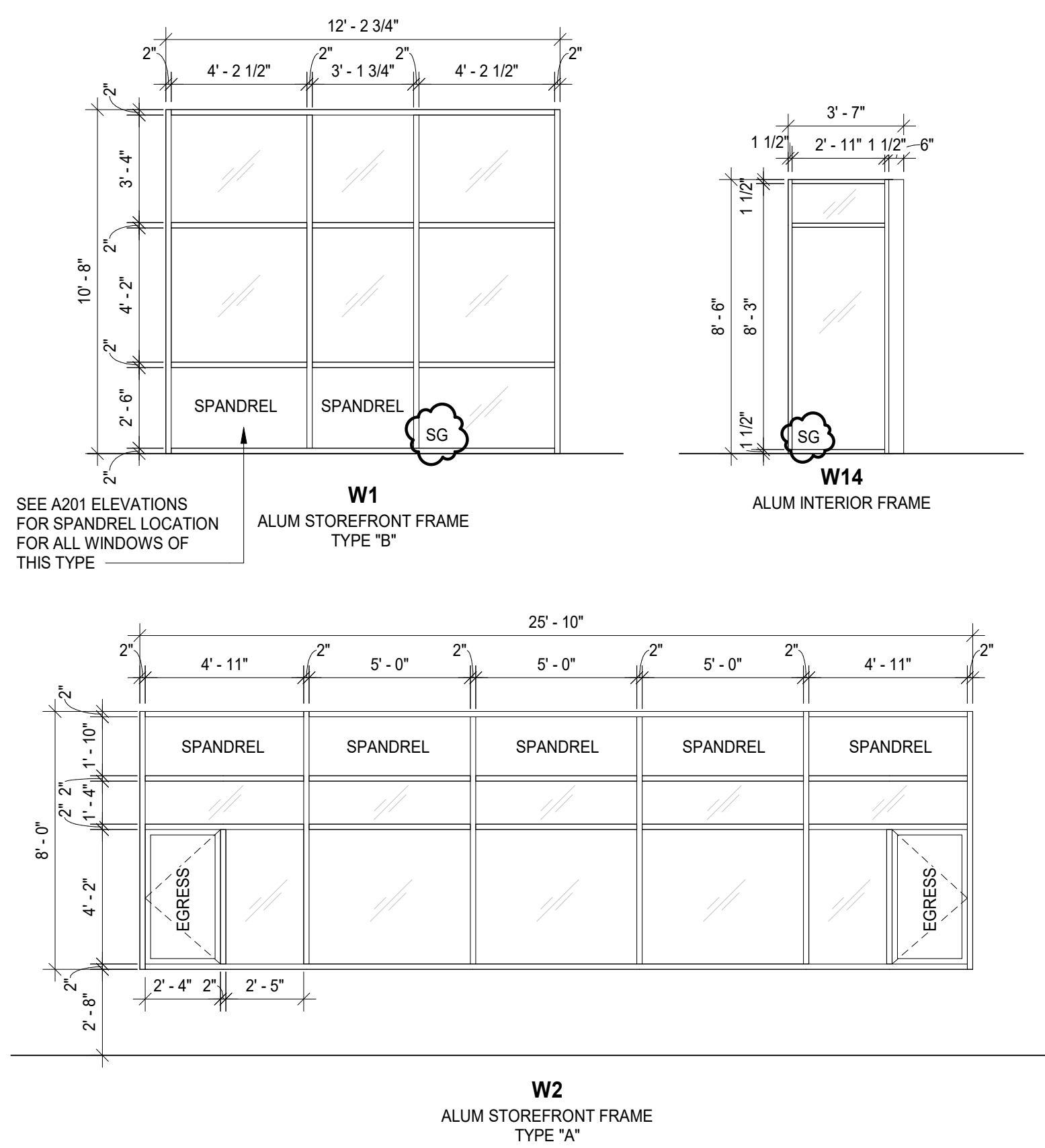
DOOR SCHEDULE												
DOOR #	DOOR				FRAME			GENERAL				DOOR #
	WIDTH	HEIGHT	THK.	TYPE	MAT-FIN	TYPE	MAT-FIN	DETAIL	HDWR	RATING	REMARKS	
Existing 102B	6' - 0"	7' - 0"	1 3/4"	HG	Phase - Exist	-	Phase - Exist	-	08	-	EXISTING DOOR AND FRAME TO RECEIVE HARDWARE	102B
Phase 1												
100B	6' - 0"	7' - 0"	1 3/4"	FG	ALUM - FF	5	ALUM - FF	B	06	-	-	100B
100C	3' - 0"	7' - 0"	1 3/4"	FG	WD - ST	4	HM - PT	A	05	20 MIN	45 MIN SIDELIGHT	100C
101A	3' - 1 1/2"	7' - 0"	2"	FG 2 : AG	-	7	ALUM - FF	D	09	-	PERIMETER SOUND SEALS	101A
101D	2' - 8"	7' - 0"	1 3/4"	F	WD - ST	1	HM - PT	C	02	-	-	101D
101C	2' - 8"	7' - 0"	1 3/4"	F	WD - ST	1	HM - PT	C	01	-	-	101C
101B	3' - 1 1/2"	7' - 0"	2"	FG 2 : AG	-	7	ALUM - FF	D	09	-	PERIMETER SOUND SEALS	101B
102A	3' - 0"	7' - 0"	1 3/4"	HG	WD - ST	6	HM - PT	A	04	20 MIN	45 MIN SIDELIGHT	102A
100A	6' - 0"	7' - 0"	1 3/4"	FG	ALUM - DK BRONZE ANODIZED	3	ALUM - DK BRONZE ANODIZED	1, 2/A601	07	-	-	100A



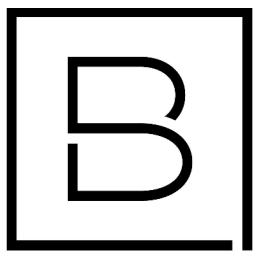
DOOR - TYPES



DOOR - FRAME TYPES



WINDOW - FRAME TYPES



BERGMANN
ARCHITECTS ENGINEERS PLANNERS

560 5th St. NW
Suite 305
Grand Rapids, MI 49504
www.bergmannpc.com

**ORCHARD VIEW
SCHOOL
DISTRICT**

**COMMUNITY
EDUCATION
CENTER**

1765 ADA AVENUE
MUSKEGON, MI 49442

Date Revised	Description
1/24/2023	BID PACKAGE #1 - OWNER REVIEW
1/31/2023	BID PACKAGE #1 - BIDS
2/7/2023	BID PACKAGE #1 - PERMITS
2/15/2023	BID PACKAGE #1 - ADDENDUM #1
2/17/2023	BID PACKAGE #1 - ADDENDUM #2

Copyright © Bergmann Associates, Architects, Engineers, Landscape Architects & Surveyors, D.P.C.

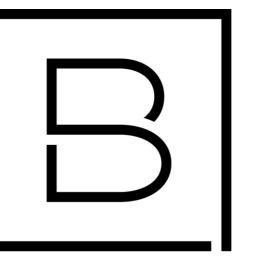
Project Manager	Discipline Lead
D HOLTROP	B HUYLER
Designer	Reviewer
E POST	R KEUNEKE
Date Issued	Project Number
2/17/2023	16600.00

Sheet Name

SCHEDULES, DOOR AND WINDOW DETAILS

Drawing Number

A601



BERGMANN
ARCHITECTS ENGINEERS PLANNERS

560 5th St. NW
Suite 305
Grand Rapids, MI 49504

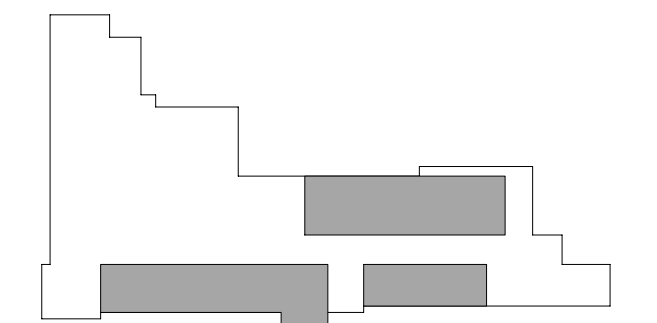
www.bergmannpc.com

ORCHARD VIEW SCHOOL DISTRICT

COMMUNITY EDUCATION CENTER

1765 ADA AVENUE
MUSKEGON, MI 49442

Date Revised	Description
1/24/2023	BID PACKAGE #1 - OWNER REVIEW
1/31/2023	BID PACKAGE #1 - BIDS
2/7/2023	BID PACKAGE #1 - PERMITS
2/15/2023	BID PACKAGE #1 - ADDENDUM #1
2/17/2023	BID PACKAGE #1 - ADDENDUM #2



Key Plan

Copyright © Bergmann Associates, Architects, Engineers, Landscape Architects & Surveyors, D.P.C.

Project Manager	Discipline Lead
D HOLTROP	A ROBINSON
Designer	Reviewer
J BOK	A ROBINSON
Date Issued	Project Number
2/17/2023	16600.00

Sheet Name

ELECTRICAL DEMOLITION PLAN

Drawing Number

ED101

GENERAL NOTES:

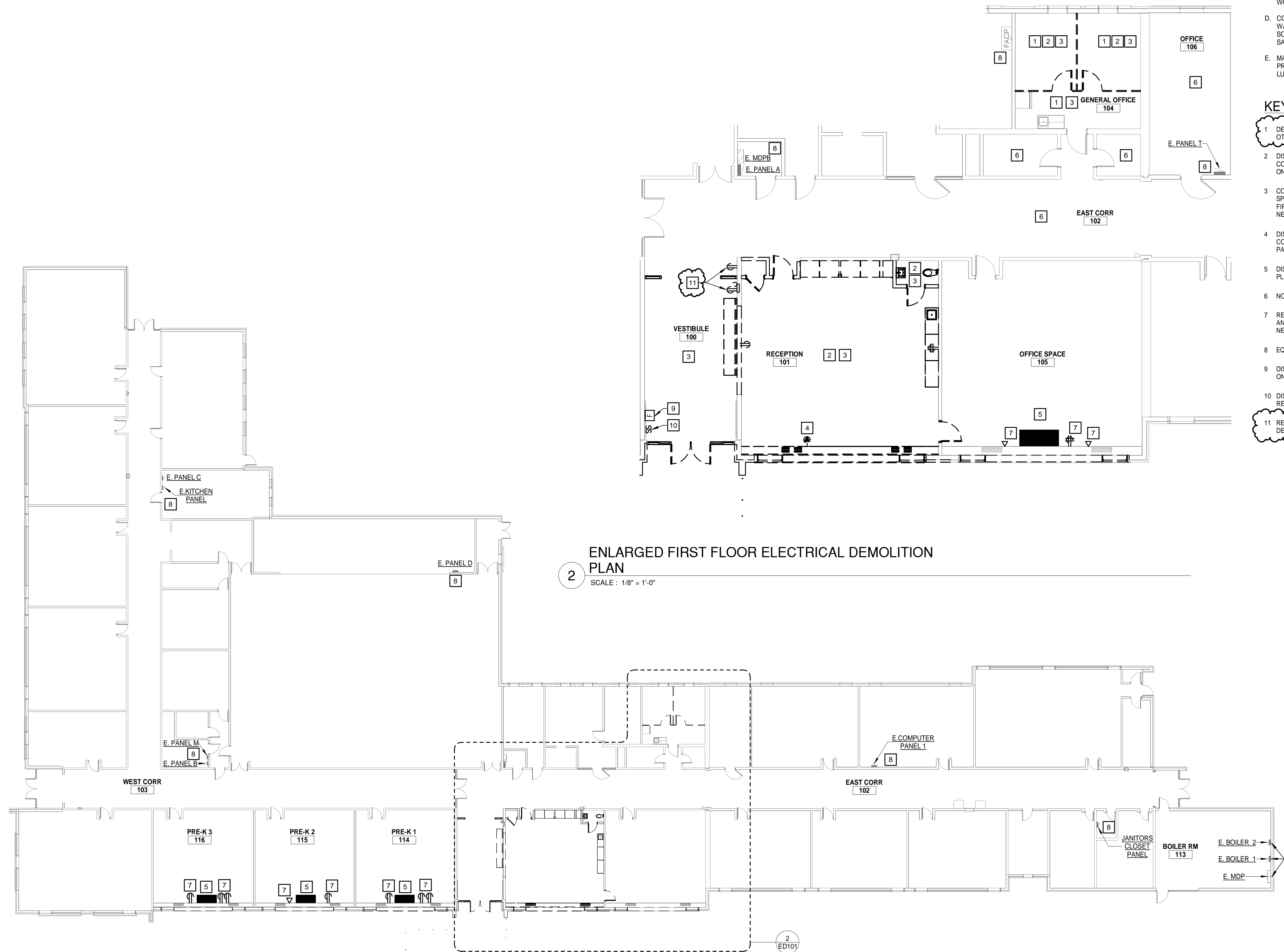
- A. ANY EXISTING CONDITIONS INDICATED ARE BASED ON INFORMATION PROVIDED BY OTHERS AND POSSIBLE LIMITED FIELD VERIFICATION. THE CONTRACTOR SHALL ADJUST FOR THE ACTUAL FIELD CONDITIONS AT NO EXPENSE TO THE OWNER.
- B. THE CONTRACTOR SHALL VISIT THE PROJECT SITE, REVIEW EXISTING CONDITIONS AGAINST THE PLANS, AND FAMILIARIZE THEMSELVES WITH THE WORK PRIOR TO BIDDING AND START OF THE WORK.
- C. THE CONTRACTOR IS RESPONSIBLE FOR DEMOLITION OF EXISTING EQUIPMENT, DEVICES, AND LUMINAIRES AS INDICATED AND/OR AS REQUIRED TO ALLOW FOR INSTALLATION AND CONSTRUCTION OF THE NEW WORK. REMOVE ALL EQUIPMENT, DEVICES, LUMINAIRES, CONDUITS, SUPPORTS, HANGERS, ECT. THAT ARE NOT SHOWN AND ARE REQUIRED TO BE REMOVED IN ORDER TO COMPLETE THE NEW WORK.
- D. CONTRACTOR SHALL DISCONNECT AND REMOVE ALL DEVICES IN WALLS BEING REMOVED. REMOVE BOXES, CONDUITS, AND WIRE TO SOURCE OR FIRST JUNCTION BOX TO MAINTAIN EXISTING DEVICES ON SAME CIRCUIT.
- E. MAINTAIN CONTINUITY OF EXISTING CIRCUITS AS REQUIRED TO PROVIDE POWER TO REMAINING EQUIPMENT, DEVICES, AND LUMINAIRES THAT ARE NOT BEING REMOVED.

KEYNOTES

- 1 DEVICES ON EXTERIOR WALLS IN SPACE SHALL REMAIN UNLESS NOTED OTHERWISE. PROVIDE NEW COVER PLATES FOR EXISTING DEVICES.
- 2 DISCONNECT AND REMOVE ALL DEVICES IN SPACE. REMOVE ALL CONDUIT AND WIRE TO FIRST JUNCTION BOX. ALL DEVICES REMAINING ON CIRCUIT SHALL REMAIN ACTIVE.
- 3 CONTRACTOR SHALL DISCONNECT AND REMOVE LIGHT FIXTURES IN SPACE. REFER TO NEW LIGHTING PLANS. REMOVE LUMINAIRE WHIP TO FIRST JUNCTION BOX. FEEDER CONDUIT AND WIRE MAY REMAIN FOR NEW WORK.
- 4 DISCONNECT AND REMOVE WINDOW AC UNIT RECEPTACLE, CONDUIT, RACEWAY AND WIRE TO SOURCE. REMOVE BREAKER FROM PANEL.
- 5 DISCONNECT HEAT PUMP FOR RELOCATION BY OTHERS. REFER TO NEW PLANS FOR NEW LOCATION.
- 6 NO WORK IN SPACE UNLESS NOTED OTHERWISE.
- 7 REMOVE SURFACE RACEWAY AND DEVICES TO CEILING. FEEDER, WIRE, AND CONDUIT TO REMAIN FOR NEW RACEWAY AND DEVICES. REFER TO NEW POWER PLANS.
- 8 EQUIPMENT SHALL REMAIN.
- 9 DISCONNECT FOR ARCHITECTURAL DEMOLITION. REINSTALL AS SHOWN ON POWER PLAN.
- 10 DISCONNECT AND REMOVE DEVICE AND WIRE TO FIRST JUNCTION BOX. RECESSED CONDUIT AND BOX TO REMAIN.
- 11 REMOVE DEVICE, WIRE, AND RACEWAY TO FIRST JUNCTION BOX. ALL DEVICES REMAINING ON CIRCUIT SHALL REMAIN ACTIVE.

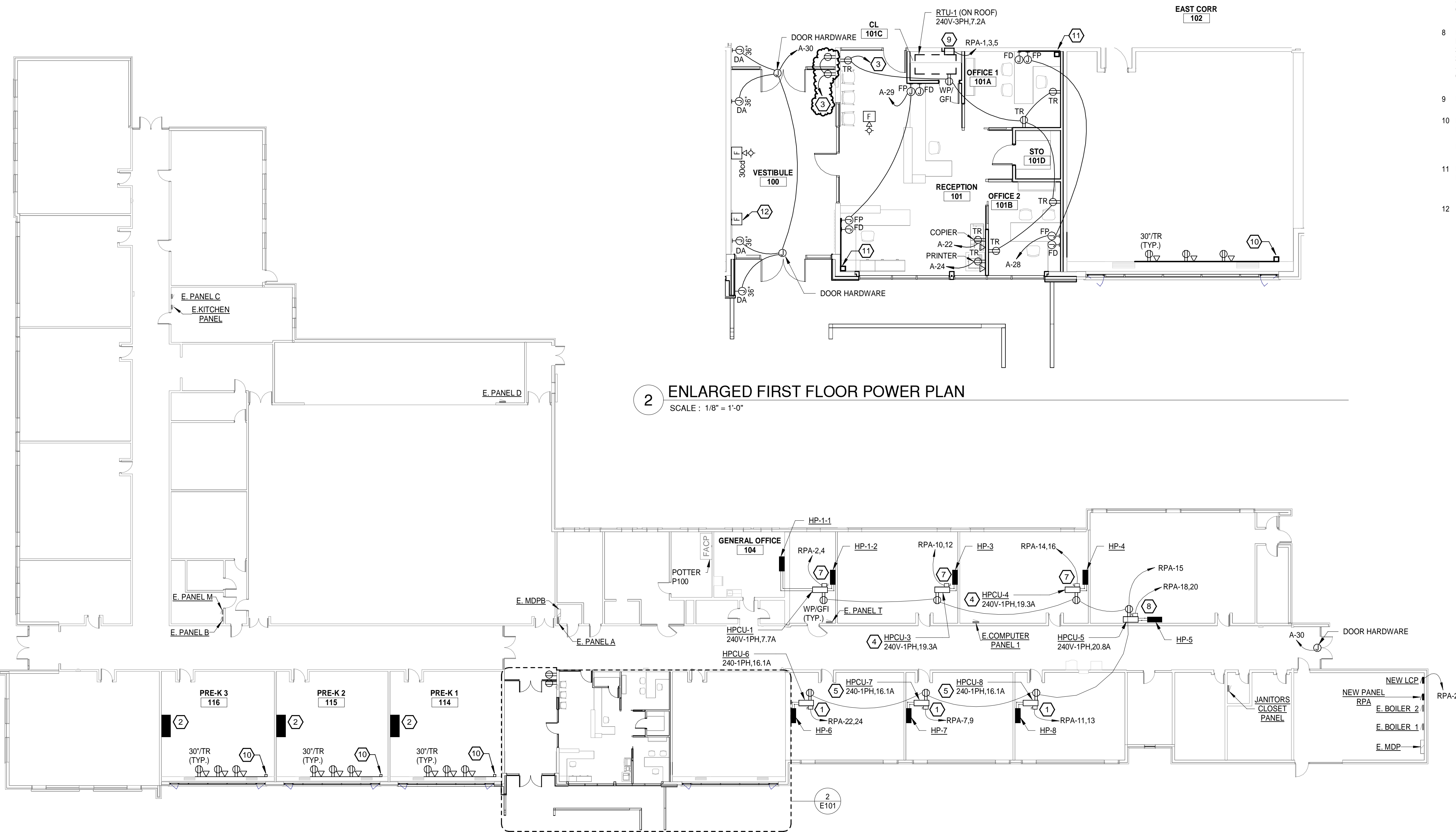
ENLARGED FIRST FLOOR ELECTRICAL DEMOLITION PLAN

SCALE : 1/8" = 1'-0"



1 FIRST FLOOR ELECTRICAL DEMOLITION PLAN

SCALE : 1/16" = 1'-0"



1 FIRST FLOOR PLAN - POWER
SCALE : 1/16" = 1'-0"

2 ENLARGED FIRST FLOOR POWER PLAN
SCALE : 1/8" = 1'-0"

KEYNOTES

- 1 PROVIDE 30A/3P NON-FUSED NEMA 3R DISCONNECT ON ROOF AND MOUNT ON SEPARATE SUPPORTS. PROVIDE POWER FEED DOWN TO FAN UNIT IN 3/4" CONDUIT. SEAL ALL PENETRATIONS TO MAINTAIN ROOF SYSTEM. PENETRATIONS AND EXPOSED CONDUIT SHALL BE RIGID CONDUIT WITH LFNC FOR FINAL CONNECTION.
- 2 RELOCATED SIDEWALL HEAT PUMP CASSETTE. EXTEND CONDUIT, WIRE, AND CONTROLS AS REQUIRED.
- 3 CIRCUIT NEW RECEPTACLES TO EXISTING CIRCUIT SERVING PREVIOUS RECEPTACLES IN SPACE.
- 4 ALTERNATE 1: DO NOT PROVIDE HPCU-3 AND HPCU-4 SPLIT SYSTEMS. INSTEAD PROVIDE A 240V-1PH, 40A CIRCUIT FROM PANEL RPA. PROVIDE A 40A/2P BREAKER, 2#8, #10EGC IN 3/4-INCH CONDUIT TO ALTERNATE EQUIPMENT.
- 5 ALTERNATE 1: DO NOT PROVIDE HPCU-7 AND HPCU-8 SPLIT SYSTEMS. INSTEAD PROVIDE A 240V-1PH, 40A CIRCUIT FROM PANEL RPA. PROVIDE A 40A/2P BREAKER, 2#8, #10EGC IN 3/4-INCH CONDUIT TO ALTERNATE EQUIPMENT.
- 7 PROVIDE 30A/3P NON-FUSED NEMA 3R DISCONNECT ON ROOF AND MOUNT ON SEPARATE SUPPORTS. PROVIDE 2#10, #10EGC IN 3/4-INCH CONDUIT. SEAL ALL PENETRATIONS TO MAINTAIN ROOF SYSTEM. PENETRATIONS AND EXPOSED CONDUIT SHALL BE RIGID CONDUIT WITH LFNC FOR FINAL CONNECTION.
- 8 PROVIDE 60A/3P NON-FUSED NEMA 3R DISCONNECT ON ROOF AND MOUNT ON SEPARATE SUPPORTS. PROVIDE 2#8, #10EGC IN 3/4-INCH CONDUIT. SEAL ALL PENETRATIONS TO MAINTAIN ROOF SYSTEM. PENETRATIONS AND EXPOSED CONDUIT SHALL BE RIGID CONDUIT WITH LFNC FOR FINAL CONNECTION.
- 9 PROVIDE 30A/3P NON-FUSED NEMA 3R DISCONNECT SWITCH
- 10 PROVIDE STEEL WIREMOLD DUAL CHANNEL 4000 SERIES RACEWAY. PROVIDE ALL COMPONENTS NECESSARY FOR A NEAT AND CLEAN INSTALLATION. PROVIDE DEVICES AND CIRCUITS SHOWN. EXTEND EXISTING CIRCUITS FROM REMOVED DEVICES.
- 11 PROVIDE STEEL WIREMOLD DUAL CHANNEL 4000 SERIES RACEWAY. PROVIDE ALL COMPONENTS NECESSARY FOR A NEAT AND CLEAN INSTALLATION. PROVIDE DEVICES AND CIRCUITS SHOWN.
- 12 REINSTALL FIRE ALARM DEVICE



560 5th St. NW
Suite 305
Grand Rapids, MI 49504

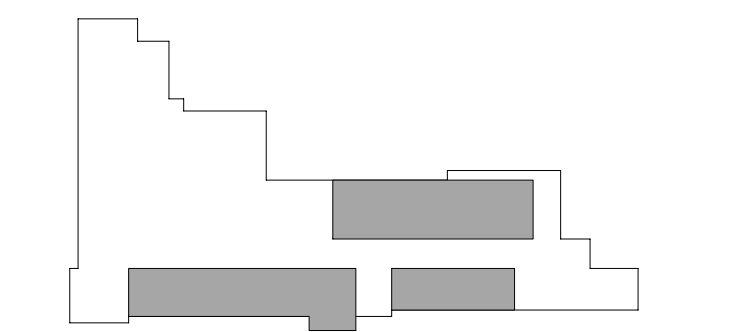
www.bergmannpc.com

**ORCHARD VIEW
SCHOOL
DISTRICT**

**COMMUNITY
EDUCATION
CENTER**

1765 ADA AVENUE
MUSKEGON, MI 49442

Date Revised	Description
1/24/2023	BID PACKAGE #1 - OWNER REVIEW
1/31/2023	BID PACKAGE #1 - BIDS
2/7/2023	BID PACKAGE #1 - PERMITS
2/15/2023	BID PACKAGE #1 - ADDENDUM #1
2/17/2023	BID PACKAGE #1 - ADDENDUM #2



Key Plan

Copyright © Bergmann Associates, Architects, Engineers, Landscape Architects & Surveyors, D.P.C.

Project Manager	Discipline Lead
D HOLTROP	A ROBINSON
Designer	Reviewer
J BOIK	A ROBINSON
Date Issued	Project Number
2/17/2023	16600.00

Sheet Name

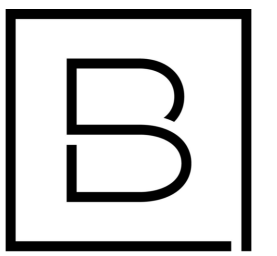
POWER PLAN

Drawing Number

E101

KEYNOTES

- 1 REUSE EXISTING LIGHTING CIRCUIT SERVING SPACE.
- 2 PROVIDE LIGHTING CONTROL PANEL WITH 4-RELAYS AND ASTROCLOCK EQUAL TO BLUEBOX LT.
- 3 INSTALL NEW DEVICE AND WIRE. REUSE RECESSED CONDUIT AND BOX.



BERGMANN
ARCHITECTS ENGINEERS PLANNERS

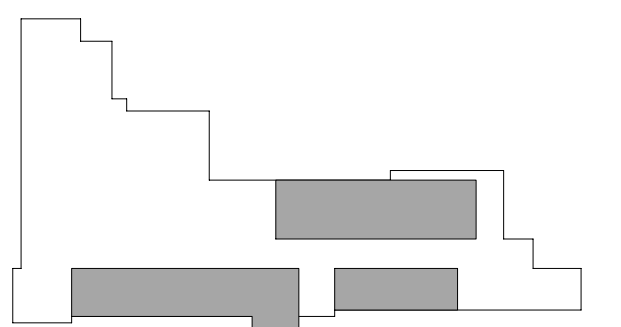
560 5th St. NW
Suite 305
Grand Rapids, MI 49504
www.bergmannpc.com

**ORCHARD VIEW
SCHOOL
DISTRICT**

**COMMUNITY
EDUCATION
CENTER**

1765 ADA AVENUE
MUSKEGON, MI 49442

Date Revised	Description
1/24/2023	BID PACKAGE #1 - OWNER REVIEW
1/31/2023	BID PACKAGE #1 - BIDS
2/7/2023	BID PACKAGE #1 - PERMITS
2/15/2023	BID PACKAGE #1 - ADDENDUM #1
2/17/2023	BID PACKAGE #1 - ADDENDUM #2



Key Plan

Copyright © Bergmann Associates, Architects, Engineers, Landscape Architects & Surveyors, D.P.C.

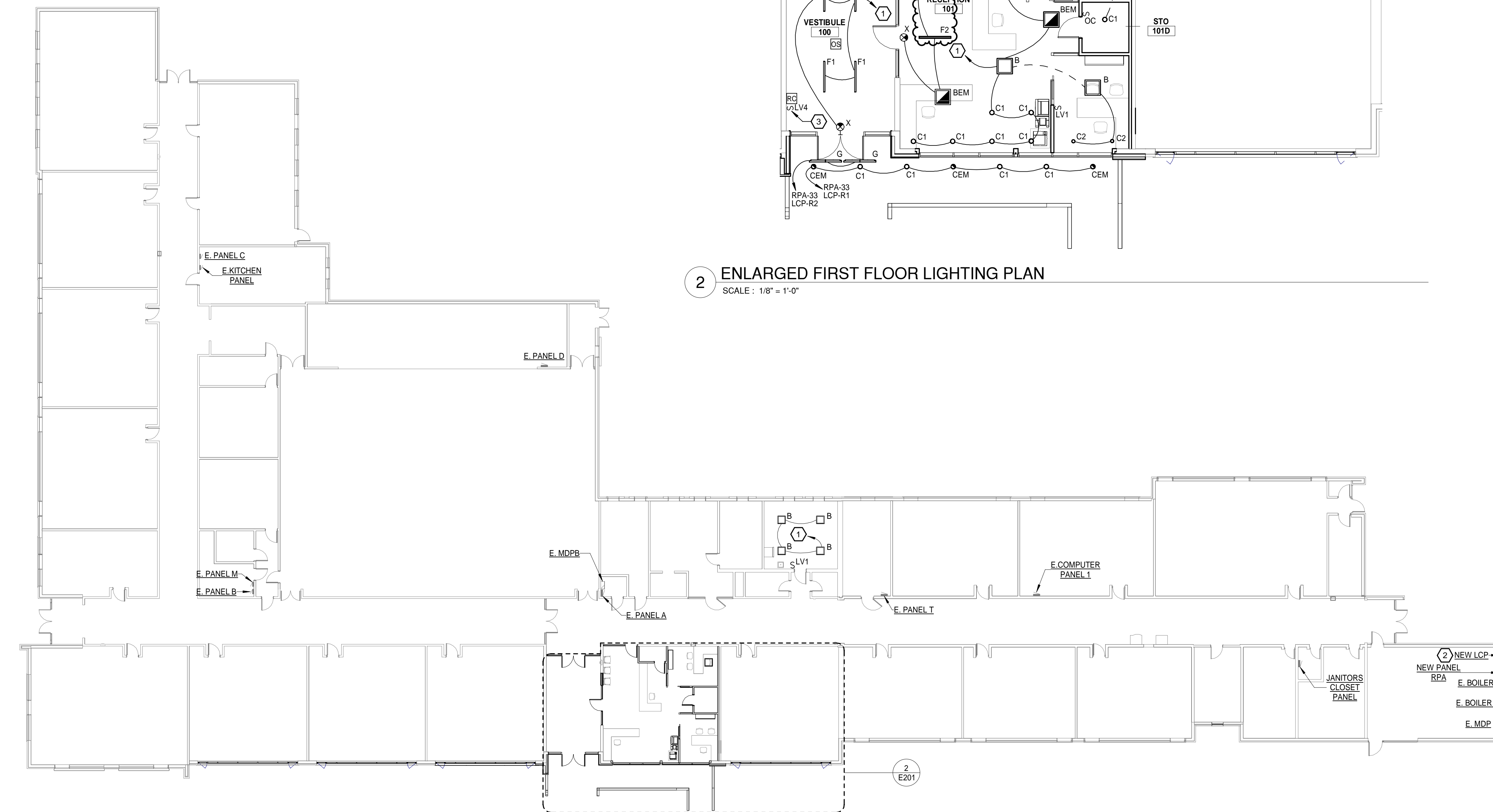
Project Manager	Discipline Lead
D. HOLTROP	A. ROBINSON
Designer	Reviewer
J. BOIK	A. ROBINSON
Date Issued	Project Number
2/17/2023	16600.00

Sheet Name

LIGHTING PLAN

Drawing Number

E201



2 ENLARGED FIRST FLOOR LIGHTING PLAN
SCALE : 1/8" = 1'-0"

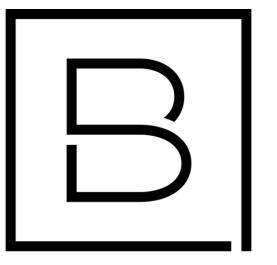
1 FIRST FLOOR LIGHTING PLAN
SCALE : 1/16" = 1'-0"

SEQUENCE OF OPERATION:

1. LIGHTING CONTROL INTENTION IS TO USE LIGHT FIXTURES WITH INTEGRATED CONTROLS AND ASSOCIATED LOW VOLTAGE SWITCHES, UNLESS NOTED OTHERWISE WITH ROOM CONTROLLERS. DEVIATION FROM THIS SOLUTION SHALL MEET CONTROL INTENTIONS AND COORDINATED WITH ELECTRICAL CONTRACTOR FOR ADDITIONAL WIRING AND INSTALLATION.
2. ALL SWITCHES WITH "LVF" ARE LOW VOLTAGE WIRED CONTROL STATIONS. PROVIDE ON/OFF BUTTONS, PRE-PROGRAMMED SCENES, NETWORK ROOM CONTROLLER AND INTEGRATED CONTROLS TO SYSTEM FOR TIME OF DAY FEATURES
3. **LV1: ENCLOSED OFFICE:**
 - A. LIGHTING COME ON AUTOMATICALLY AT 50% UPON ENTRANCE TO SPACE.
 - B. LIGHTING SHALL REMAIN ON UNTIL 20-MINUTES AFTER NO ACTIVITY AND THEN TURN OFF.
 - C. LOCAL OVERRIDE STATIONS SHALL INCLUDE BUTTONS (LABEL: PROGRAMMING):
 - a. ON: LUMINAIRES 100%
 - b. 50%: LUMINAIRES AT 50%
 - c. DIM UP
 - d. DIM DOWN
 - e. OFF: LUMINAIRES ALL OFF
4. **LV2: OPEN OFFICE:**
 - A. LIGHTING COME ON AUTOMATICALLY AT 50% UPON ENTRANCE TO SPACE.
 - B. LIGHTING SHALL REMAIN ON UNTIL 20-MINUTES AFTER NO ACTIVITY AND THEN TURN OFF.
 - C. PROVIDE QUANTITY OF ROOM CONTROLLERS AND OCCUPANCY SENSORS PER MANUFACTURER REQUIREMENTS
 - D. LOCAL OVERRIDE STATIONS SHALL INCLUDE BUTTONS (LABEL: PROGRAMMING):
 - a. ON: LUMINAIRES 100%
 - b. 50%: LUMINAIRES AT 50%
 - c. DIM UP
 - d. DIM DOWN
 - e. OFF: LUMINAIRES ALL OFF
6. **LV4: CORRIDORS/VESTIBULE:**
 - A. LIGHTING COME ON AUTOMATICALLY AT 50% DURING NORMAL OCCUPIED TIMES.
 - B. OCCUPANCY SENSOR SHALL DIM LIGHTS TO 100% UPON AREA OCCUPANCY
 - C. OCCUPANCY SENSOR SHALL DIM LIGHTS TO 50% UPON 30 MINUTES OF NO AREA OCCUPANCY
 - D. NETWORK TO SYSTEM FOR TIME OF DAY. SYSTEM SHALL TURN LIGHTING OFF DURING NON-OCCUPIED TIMES.
 - E. EMERGENCY FIXTURE TO REMAIN ON AS NIGHTLIGHT.
 - F. PROVIDE QUANTITY OF ROOM CONTROLLERS AND OCCUPANCY SENSORS PER MANUFACTURER REQUIREMENTS
 - G. LOCAL OVERRIDE STATIONS SHALL INCLUDE BUTTONS (LABEL: PROGRAMMING):
 - a. ON: LUMINAIRES 100%
 - b. 50%: LUMINAIRES AT 50%
 - c. DIM UP
 - d. DIM DOWN
 - e. OFF: LUMINAIRES ALL OFF
7. **LV5: STORAGE:**
 - A. PROVIDE SWITCH STYLE OCCUPANCY SENSOR.
 - B. LV7 STATIONS SHALL INCLUDE BUTTONS
 - A. ON
 - B. OFF

		LUMINAIRE SCHEDULE							
TYPE	LAMP	MANUFACTURER	MODEL NUMBER	BALLAST/DRIVER	MOUNTING	INPUT WATTAGE	DESCRIPTION	NOTE	
A	4000 LUMEN, 3500K, LED	METALUX	24C22-40-UNV-L835-CD1-SWPD1	0-10V	RECESSED GRID CEILING	29W	2x4 TROFFER. PROVIDE INTEGRAL OCCUPANCY SENSOR		
		COLUMBIA	LCAT-24-40-HL-G-ED-U-NXES						
		LITHONIA	2BLT4-40L-ADSM-T-EZ1-LP835-N100-NESPD77ADCX						
		DAYBRITE	2EVO-G-43L-835-4-D-UNV-DIM-SWZG2						
AEM	4000 LUMEN, 3500K, LED	METALUX	24C22-40-UNV-L835-EL7W-CD1-SWPD1	0-10V	RECESSED GRID CEILING	29W	2x4 TROFFER. PROVIDE INTEGRAL OCCUPANCY SENSOR AND 7W EMERGENCY BATTERY.		
		COLUMBIA	LCAT-24-40-HL-G-ED-U-NXES-ELL14						
		LITHONIA	2BLT4-40L-ADSM- E-Z1-LP835-N100-NESPD77ADCX EL7L						
		DAYBRITE	2EVO-G-43L-835-4-D-UNV-DIM-EMLED-SWZG2						
B	3100 LUMEN, 3500K, LED	METALUX	22C22-32HE-UNV-L835-SWPD1-CD1	0-10V	RECESSED CEILING GRID	23.5W	2x2 TROFFER. PROVIDE INTEGRAL OCCUPANCY SENSOR		
		COLUMBIA	LCAT-22-35-ML-G-ED-U-NXES						
		LITHONIA	2BLT2-33L-ADSM-T-EZ1-LP835-N100-NESPD77ADCX						
		DAYBRITE	2EVO-G-45L-835-2-D-UNV-DIM-SWZG2						
BEM	3100 LUMEN, 3500K, LED	METALUX	22C22-32HE-UNV-L835-EL7W-CD1-SWPD1	0-10V	RECESSED CEILING GRID	23.5W	2x2 TROFFER. PROVIDE INTEGRAL OCCUPANCY SENSOR AND 7W EMERGENCY BATTERY.		
		COLUMBIA	LCAT-22-35-ML-G-ED-U-NXES-ELL14						
		LITHONIA	2BLT2-33L-ADSM-T-EZ1-LP835-N100-NESPD77ADCX-EL7L						
		DAYBRITE	2EVO-G-45L-835-2-D-UNV-DIM-EMLED-SWZG2						
C1	2000 LUMEN, 3500K, LED	PRESCOLITE	LTR-6RD-SL-10L-DM1-NXE-LTR-6RD-T-SL-35K-8-MD-SS-WT-B24	0-10V	RECESSED CEILING GRID	22.1W	6" RECESSED CAN.		
		GOTHAM	EVO6-35/10-AR-LSS-MD-120-EZ1-NLT-TRW						
		PORTFOLIO	LD6B-10-D010-EU6B-1020-80-35-6LB-M-0-H-HB26						
		CALCULITE	8R-N-C6L-10-8-35-M-210-U-C6-R-DL-CL						
C1EM	2000 LUMEN, 3500K, LED	PRESCOLITE	LTR-6RD-H-ML-DM1-NXE-EMR-LTR-6RD-T-ML-35K-8-MD-SS-WT-B24	0-10V	RECESSED CEILING GRID	22.1W	6" RECESSED CAN. PROVIDE REMOTE TEST SWITCH AND 10W EMERGENCY BATTERY.		
		GOTHAM	EVO6-35/10-AR-LSS-MD-120-EZ1-NLT-TRW-EL						
		PORTFOLIO	LD6B-20-D010-EU6B-1020-80-35-6LB-M-0-H-HB26						
		CALCULITE	8R-N-EM-C6L-20-8-35-M-210-U-C6-R-DL-CL						
C2	1100 LUMEN, 3500K, LED	PRESCOLITE	LTR-4RD-H-SL-DM1-NXE-LTR-4RD-T-SL-35K-8-MD-SS-WT-B24	0-10V	RECESSED CEILING GRID	12.7W	4" RECESSED CAN. PROVIDE INTEGRAL OCCUPANCY SENSOR.		
		GOTHAM	EVO4-35/10-AR-LSS-MD-120-EZ1-NLT-TRW						
		PORTFOLIO	LD4B-10-D010-EU4B-1020-80-35-4LB-M-1-H-HB26						
		CALCULITE	4R-N-C4L-10-8-35-M-210-U-C4-R-DL-CL						
C2EM	1100 LUMEN, 3500K, LED	PRESCOLITE	LTR-4SQD-H-SL-DM1-NXE-LTR-4SQD-T-SL-35K-8-MD-SS-WT-B24	0-10V	RECESSED CEILING GRID	12.7W	4" RECESSED SQUARE CAN. PROVIDE INTEGRAL OCCUPANCY SENSOR. PROVIDE PORT TO COMMUNICATE WITH ROOM FIXTURES WITH INTEGRAL SENSORS		
		GOTHAM	EVO4SQ-35-10-AR-LSS-MVOLT-EZ1-NLT-EL						
		PORTFOLIO							
F1	875 LUMENFT, 3500K, LED	JLC-TECH	TBLX-MW-HO-4-24-DW-A-W-UNV	0-10V	SUSPENDED 10' AFF	38	4' X 2.25' SUSPENDED LINEAR		
		OMNILIGHT	GEN2-35-UHO-OCH2458-WH-FR-4H						
		LITECONTROL	2L-P-ID-STD-4-04-SOF-C1-35						
F1EM	875 LUMENFT, 3500K, LED	JLC-TECH	TBLX-MW-HO-4-24-DW-A-W-UNV-TBEM-XS-12-UNV	0-10V	SUSPENDED 10' AFF	38	4' X 2.25' SUSPENDED LINEAR. PROVIDE COMPATIBLE EMERGENCY BATTERY.		
		OMNILIGHT	GEN2-35-UHO-OCH2458-WH-FR-4H - APO-30-E24						
		LITECONTROL	2L-P-ID-STD-4-04-SOF-C1-35						
F2	1075 LUMENFT, 3500K, LED	JLC-TECH	TBLX-MW-HO-4-24-DW-U-W-UNV	0-10V	GRID BAR	38	4' X 2.25' T-BAR LINEAR		
		OMNILIGHT	GEN2-35-UHO-OCH2458-WH-FR-4H						
		ORACLE	4-LB-LED-2600L-DIM10-MVOLT-35K-85-TB-1516-FT						
F2EM	1075 LUMENFT, 3500K, LED	JLC-TECH	TBLX-MW-HO-4-24-DW-U-W-UNV-TBEM-XS-12-UNV	0-10V	GRID BAR	38	4' X 2.25' T-BAR LINEAR. PROVIDE COMPATIBLE EMERGENCY BATTERY.		
		OMNILIGHT	GEN2-35-UHO-OCH2458-WH-FR-4H - APO-30-E24						
		ORACLE	4-LB-LED-2600L-DIM10-MVOLT-35K-85-TB-1516-FT						
G	711 LUMENFT, 2500K, LED	SPI LIGHTING	SEW12145-4FT-28W-120-277V-4000K	0-10V	EXTERIOR WALL MOUNT 17"	56W	4-FOOT EXTERIOR WALL BRACKET MOUNTED LIGHT FIXTURE.		
		I2	V2355-A-4-1-BBD						
		ELLIPTIPAR	S-151-R04L-08-M-00-0-840-ZX-HGC						
		ACCLAIM	E-D-D-T						
X	LED	EVENLITE	CHY-AB-ON		UNIVERSAL	1W	DIE CAST ALUMINUM, BLACK HOUSING WITH BRUSHED ALUMINUM FACE, AND GREEN LETTERS.		
		LITHONIA	LESSG-ELN						
		SURE-LITES	CXTG						
		COMPASS	CCESGE						

NEW PANEL "LCP"										
D-DIMMER R-RELAY										
DIMMER/ RELAY #	ZONE	DESCRIPTION	PANELBOARD		LOAD	LOAD TYPE	DIMMABLE	ON/OFF SWITCHING	NOTES	
			NAME	CIR #					LIGHTING CONTROL STATION	RELAY RATING
1	1	EXTERIOR CAN LIGHTS			67W	LED		X	ASTROCLOCK	30A
2	2	EXTERIOR SIGN LIGHT			56W	LED		X	ASTROCLOCK	30A
3		SPARE								
4		SPARE								



BERGMANN ARCHITECTS ENGINEERS PLANNERS

560 5th St. NW Suite 305 Grand Rapids, MI 49504 www.bergmannpc.com

ORCHARD VIEW SCHOOL DISTRICT

COMMUNITY EDUCATION CENTER

1765 ADA AVENUE MUSKEGON, MI 49442

Date Revised	Description
1/24/2023	BID PACKAGE #1 - OWNER REVIEW
1/31/2023	BID PACKAGE #1 - BIDS
2/7/2023	BID PACKAGE #1 - PERMITS
2/15/2023	BID PACKAGE #1 - ADDENDUM #1
2/17/2023	BID PACKAGE #1 - ADDENDUM #2

Copyright © Bergmann Associates, Architects, Engineers, Landscape Architects & Surveyors, D.P.C.

Project Manager	Discipline Lead
D HOLTROP	A ROBINSON
Designer	Reviewer
J BOIK	A ROBINSON
Date Issued	Project Number
2/17/2023	16600.00

Sheet Name

SCHEDULES

Drawing Number

E801