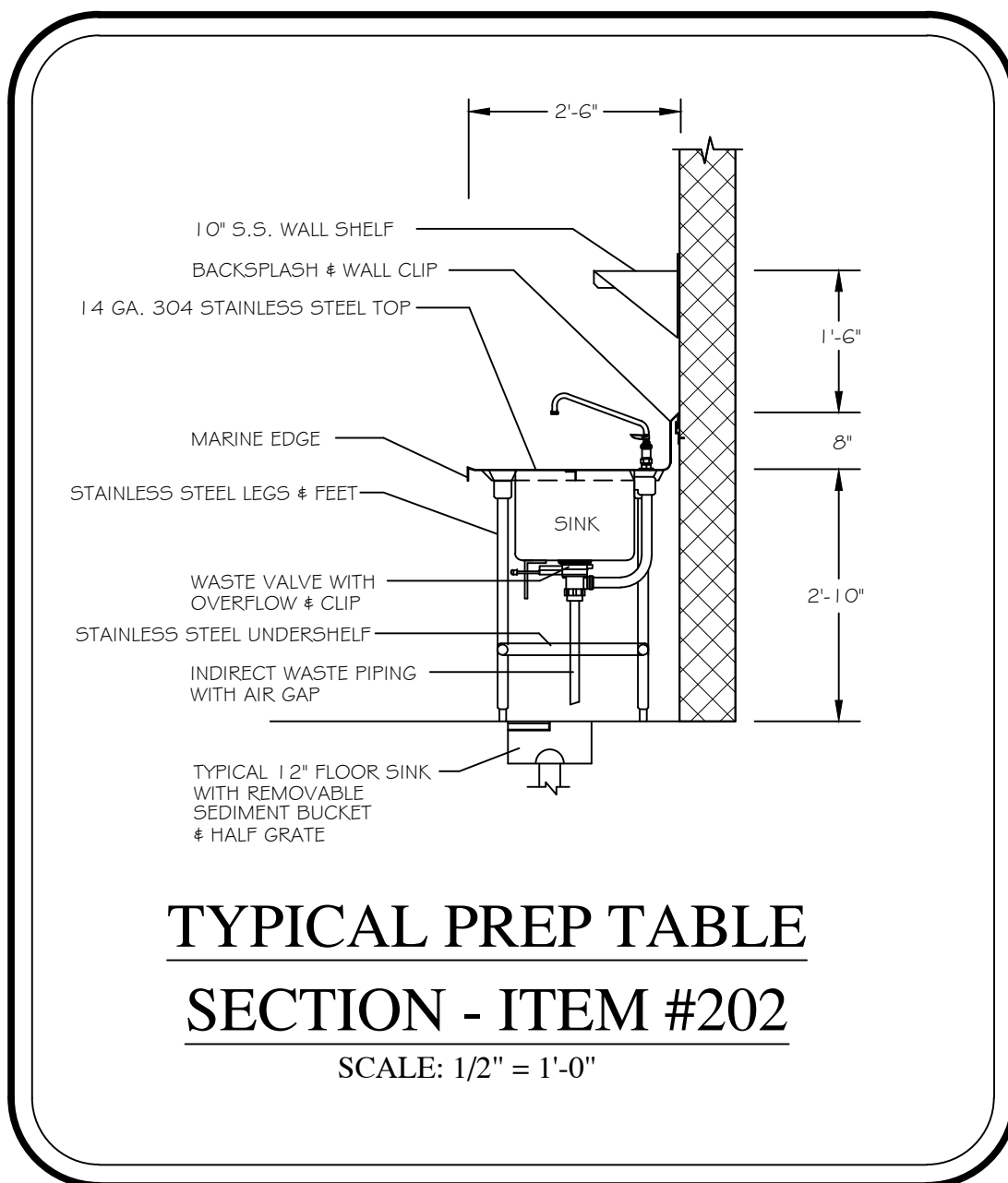
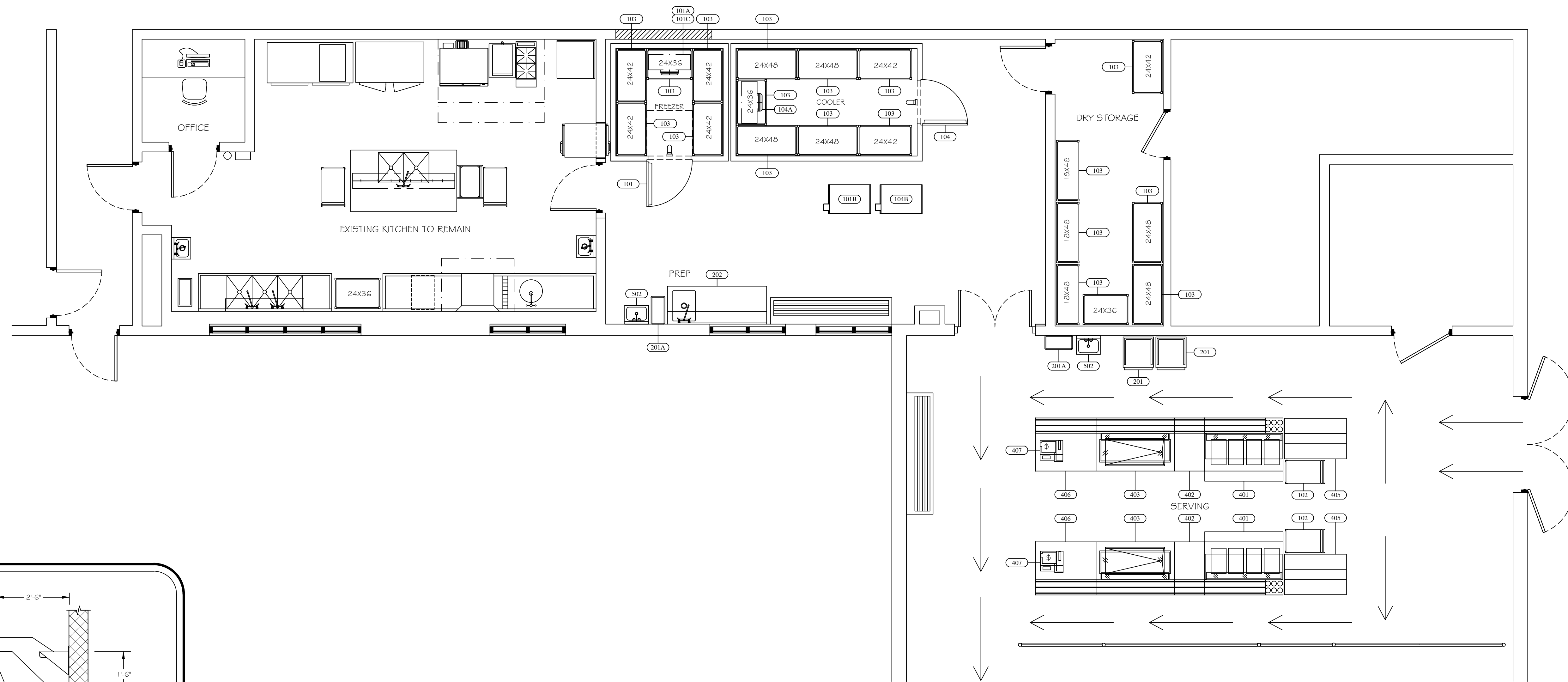




Food Service Consultants
JRA FOOD SERVICE CONSULTANTS, LLC
401 HALL STREET SW - SUITE 183H
GRAND RAPIDS, MI 49503
PH: (616) 454-4433

ARCHITECT:
BERGMANN ASSOCIATES
560 5th NW
SUITE 305
GRAND RAPIDS, MI 49504



TYPICAL PREP TABLE
SECTION - ITEM #202
SCALE: 1/2" = 1'-0"

NOTE:

1. FSEC SHALL VERIFY ROUGHIN REQUIREMENTS FOR FUTURE, PURVEYOR SUPPLIED, OWNERS RELOCATED EQUIPMENT, OWNER SUPPLIED EQUIPMENT, ETC.
2. TRADES TO REUSE EXISTING ROUGHINS WHERE APPLICABLE.
3. TRADES SHALL DISCONNECT, REMOVE, STORE & RECONNECT ANY EXISTING EQUIPMENT AS REQUIRED FOR CONSTRUCTION PURPOSES.
4. EQUIPMENT NOT BEING REUSED TO BE DISCONNECTED BY TRADES AND STORED OR DISCARDED BY THE FSEC AS DIRECTED BY OWNER.
5. EQUIPMENT DESIGNATED AS RELOCATED SHALL BE DISCONNECTED BY THE TRADES AND RELOCATED BY THE FSEC AS PER PLANS AND SPECIFICATIONS.

EQUIPMENT SCHEDULE																
Item	Qty	DESCRIPTION	CW (in)	HW (in)	INDIRECT DRAIN	DIRECT DRAIN (IN)	GAS (in)	MBTUH	EXH DUCT	EXH CFM	MUA DUCT	MUA CFM	Volts	Ph	Amps load	Equipment Remarks
101	1	WALK-IN FREEZER											120	1	8.0	INSULATED FLOOR: SEE REFRIGERATION PLAN
101A	1	FREEZER COIL			FFD								240	1	13.0	
101B	1	FREEZER COMPRESSOR											240	3	13.0	ROOF CURBS BY FSEC
101C	1	FREEZER COIL HEAT TAPE											120	1	5.0	
** 102	2	UTILITY CART														
103	19	SHELVING - POLYMER														
** 104	1	WALK-IN COOLER											120	1	8.0	INSULATED FLOOR: SEE REFRIGERATION PLAN
104A	1	COOLER COIL			FFD								120	1	5.0	
104B	1	COOLER COMPRESSOR											208	3	7.6	ROOF CURBS BY FSEC
* 201	2	TRASH BIN - BY OWNER														
201A	2	TRASH BIN - BY OWNER														
202	1	PREP TABLE	0.5	0.5	FL SK											
301	1	SPARE NUMBER														
** 401	2	HOT FOOD TABLE			FFD								240	1	9.0	
** 402	2	UTILITY COUNTER											120	1	5.2	
** 403	2	COLD FOOD TABLE			FFD								120	1	7.5	
404	1	SPARE NUMBER														
** 405	2	MILK COOLER											120	1	7.5	
** 406	2	CASHIER COUNTER														
** 407	2	CASH REGISTER/POS											120	1	10.0	DEDICATED CIRCUIT & DATA
501	1	SPARE NUMBER														
502	2	HAND SINK W/ SIDE SPLASHES	0.5	0.5		1.5										SOAP & TOWEL DISPENSER - BY OWNER

* DENOTES OWNERS EXISTING EQUIPMENT TO REMAIN
** DENOTES OWNERS EXISTING EQUIPMENT TO BE RELOCATED

PROJECT:
ORCHARD VIEW
EARLY ELEMENTARY
2820 MACARTHUR RD
MUSKEGON, MI 49442

SHEET TITLE:
FOOD SERVICE
EQUIPMENT
FLOOR PLAN
SCALE 1/4" = 1'-0"

DATE CODE	PROJECT PHASE	BY
01/31/23 OVGESFP	BIDS	CM

THIS DRAWING IS THE PROPERTY OF JRA FOOD SERVICE CONSULTANTS, LLC AND IS NOT TO BE REPRODUCED, OR REUSED WITHOUT WRITTEN PERMISSION COPYRIGHT 2023

SHEET NUMBER: