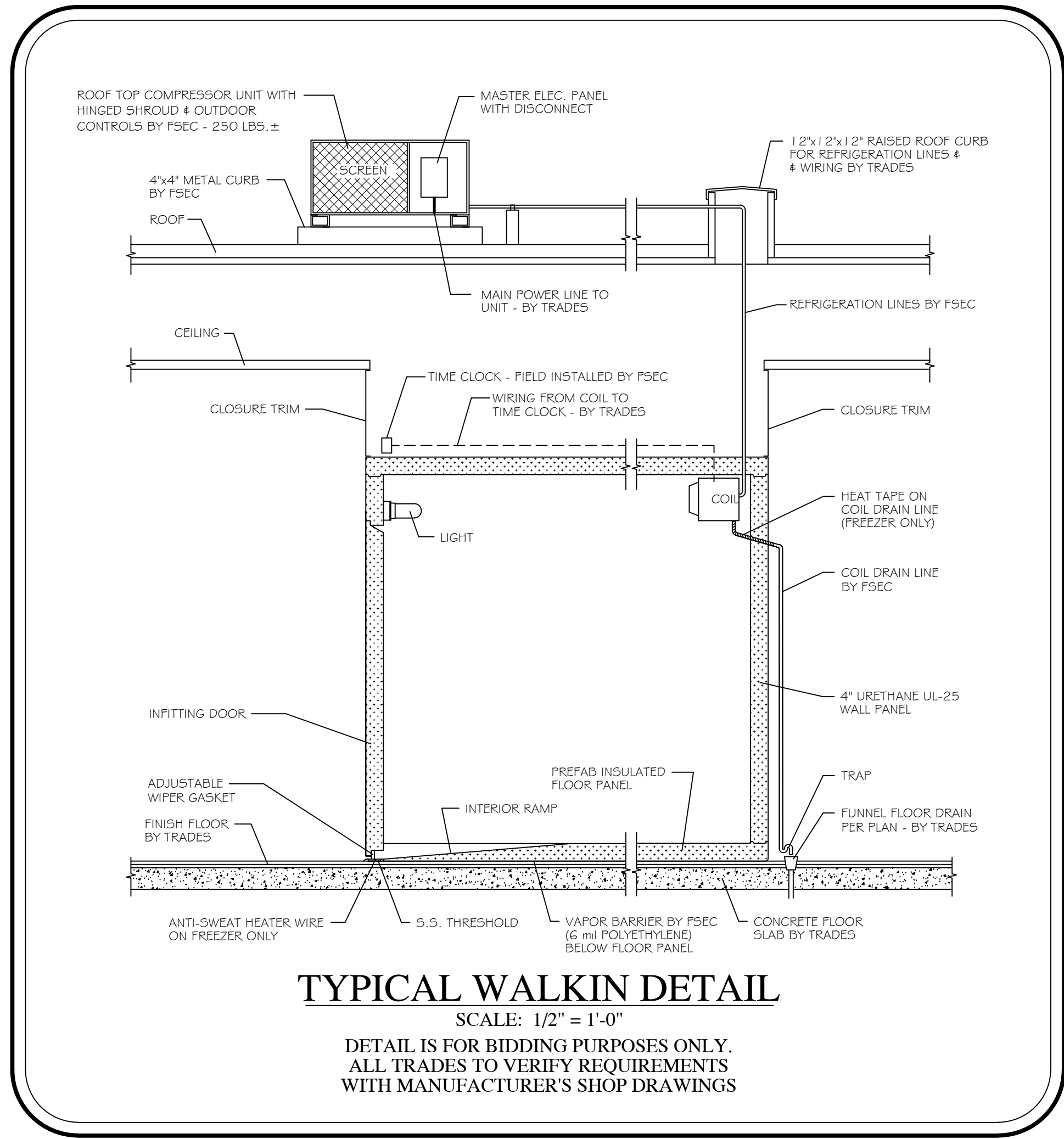


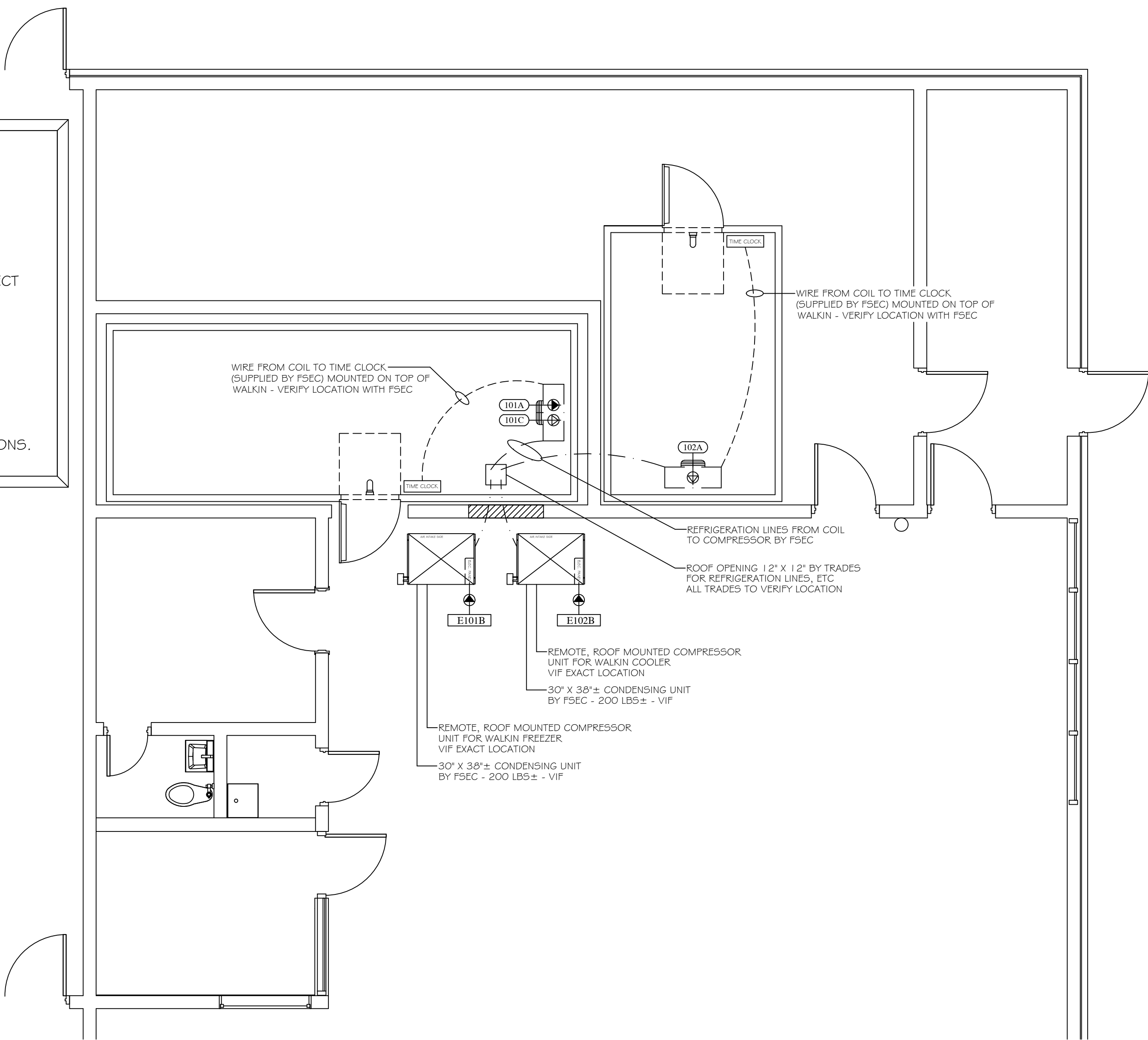
DATE CODE	PROJECT PHASE	BY
01/31/23 OVMSSR	BIDS	CM

THIS DRAWING IS THE PROPERTY OF JRA FOOD SERVICE CONSULTANTS, LLC AND IS NOT TO BE REPRODUCED, OR REUSED WITHOUT WRITTEN PERMISSION
COPYRIGHT 2023

SHEET NUMBER:



- NOTE:
- FSEC SHALL VERIFY ROUGHIN REQUIREMENTS FOR FUTURE, PURVEYOR SUPPLIED, OWNERS RELOCATED EQUIPMENT, OWNER SUPPLIED EQUIPMENT, ETC.
 - TRADES TO REUSE EXISTING ROUGHINS WHERE APPLICABLE.
 - TRADES SHALL DISCONNECT, REMOVE, STORE & RECONNECT ANY EXISTING EQUIPMENT AS REQUIRED FOR CONSTRUCTION PURPOSES.
 - EQUIPMENT NOT BEING REUSED TO BE DISCONNECTED BY TRADES AND STORED OR DISCARDED BY THE FSEC AS DIRECTED BY OWNER.
 - EQUIPMENT DESIGNATED AS RELOCATED SHALL BE DISCONNECTED BY THE TRADES AND RELOCATED BY THE FSEC AS PER PLANS AND SPECIFICATIONS.



ELECTRICAL CONNECTIONS SCHEDULE

CONN.	VOLTS	PH	KW	HP	AMPS	CONNECTION	HEIGHT	REMARKS
E101A	208	1			15.0	DIRECT	DFA	WIRING FROM COIL TO TIME CLOCK BY TRADES
E101B	208	3			15.0	DIRECT	ROOF	
E101C	120	1			5.0	DIRECT	DFA	FREEZER COIL HEAT TAPE
E102A	120	1			5.0	DIRECT	DFA	WIRING FROM COIL TO TIME CLOCK BY TRADES
E102B	208	3			10.0	DIRECT	ROOF	

- REFRIGERATION NOTES**
- FOODSERVICE EQUIPMENT TRADES
 - FSEC SHALL PROVIDE AND INSTALL WALKIN AND REFRIGERATION SYSTEM WITH COIL, CONDENSER, INSULATED LINES, OUTDOOR CONTROL PACKAGE, HINGED SHROUD, CONTROLS, CURBS, ETC. EVACUATE, CHARGE, TEST, ADJUST, ETC. PER G-5.
 - PROVIDE DIRECT EXPANSION TYPE COILS WITH ELECTRIC DEFROST SIMILAR TO BOHN CO. "LT" SERIES WITH LIQUID LINE SOLENOID VALVE, SUCTION LINE "P" TRAP, AND THERMOSTAT PIPED AND WIRED TO THE JUNCTION BOX FOR POSITIVE PUMP DOWN. PROVIDE TRAPPED COIL DRAIN LINES.
 - PROVIDE AIR-COOLED CONDENSER PACKAGE SIMILAR TO COPELAND CO. "C" SERIES WITH OUTDOOR CONTROLS, HINGED SHROUD, AND FLOODED HEAD PRESSURE CONTROL SYSTEM. ALL INTERNAL PIPING SHALL BE PRE-PIPED TO OUTSIDE OF ENCLOSURE WITH ORIER, SIGHT GLASS AND VIBRATION ELIMINATORS FOR SUCTION AND LIQUID LINES.
 - PROVIDE INSULATED, REFRIGERANT GRADE OR TYPE "L" COPPER LINE SETS WITH SILVER SOLDER.
 - ALL LINES SHALL BE SECURELY SUPPORTED AND ANCHORED WITH CLAMPS. FSEC TO VERIFY ALL DIMENSIONS AND DATA IN FIELD.
 - GENERAL TRADES
 - PROVIDE 12" X 12" ROOF OPENING AND RAISED CURB - VIF.
 - PROVIDE STRUCTURAL SUPPORT FOR CONDENSOR UNIT - VIF.
 - PROVIDE FLOOR CONSTRUCTION AND INSULATION AS PER PLAN.
 - PROVIDE PRESSURE TREATED WOOD THERMAL BREAKS UNDER ALL WALKIN WALLS UP THRU AND 1/8" ABOVE QUARRY TILE FLOOR TO TOUCH SCREEDS.
 - PROVIDE A MINIMUM OF 4" FROM CENTERLINE OF THERMAL BREAK TO ADJACENT BUILDING WALLS (TO CREATE AIR SPACE TO WALKIN WALL).
 - PROVIDE THREE LAYERS OF 2" OWENS/CORNING FOAMULAR 150 SERIES EXTRUDED POLYSTYRENE WITH R-VALUE OF 10 EACH AND DENSITY TO SUPPORT CONCRETE.
 - INSULATION MUST BE TIGHT AGAINST ALL THERMAL BREAKS AFTER CONCRETE IS POURED.
 - PROVIDE A 6 MIL POLYETHYLENE SHEET WATERTIGHT SEAL UNDER THE ENTIRE INSULATED SUBFLOOR AND UP ALL VERTICAL EXTERIOR SIDES IN CONTACT WITH THERMAL BREAKS.
 - PROVIDE POWER AND WIRING PER CODE FOR REFRIGERATION SYSTEM AND CONNECT TO CONTROL PANEL AND DISCONNECT (BY FSEC) ON ROOF TOP CONDENSING UNIT.
 - INSTALL ALL WIRING PER CODE TO SUPPLY POWER FOR COILS, TIME CLOCKS, SOLENOID/THERMOSTAT, DRAIN LINE HEATER, ETC. - VIF.
 - PROVIDE POWER AND INTERWIRE INTERIOR LIGHTS WITH EXTERIOR CONDUIT.
 - CONNECT DRAIN LINE HEATER (PROVIDED BY FSEC) IN FREEZER THROUGH J.B.
 - PROVIDE FUNNEL FLOOR DRAINS PER PLAN WITH MINIMUM PITCH 4" FROM WALKIN WALLS. PIPING SHALL NOT INTERFERE WITH INSULATED SUBFLOOR.

